

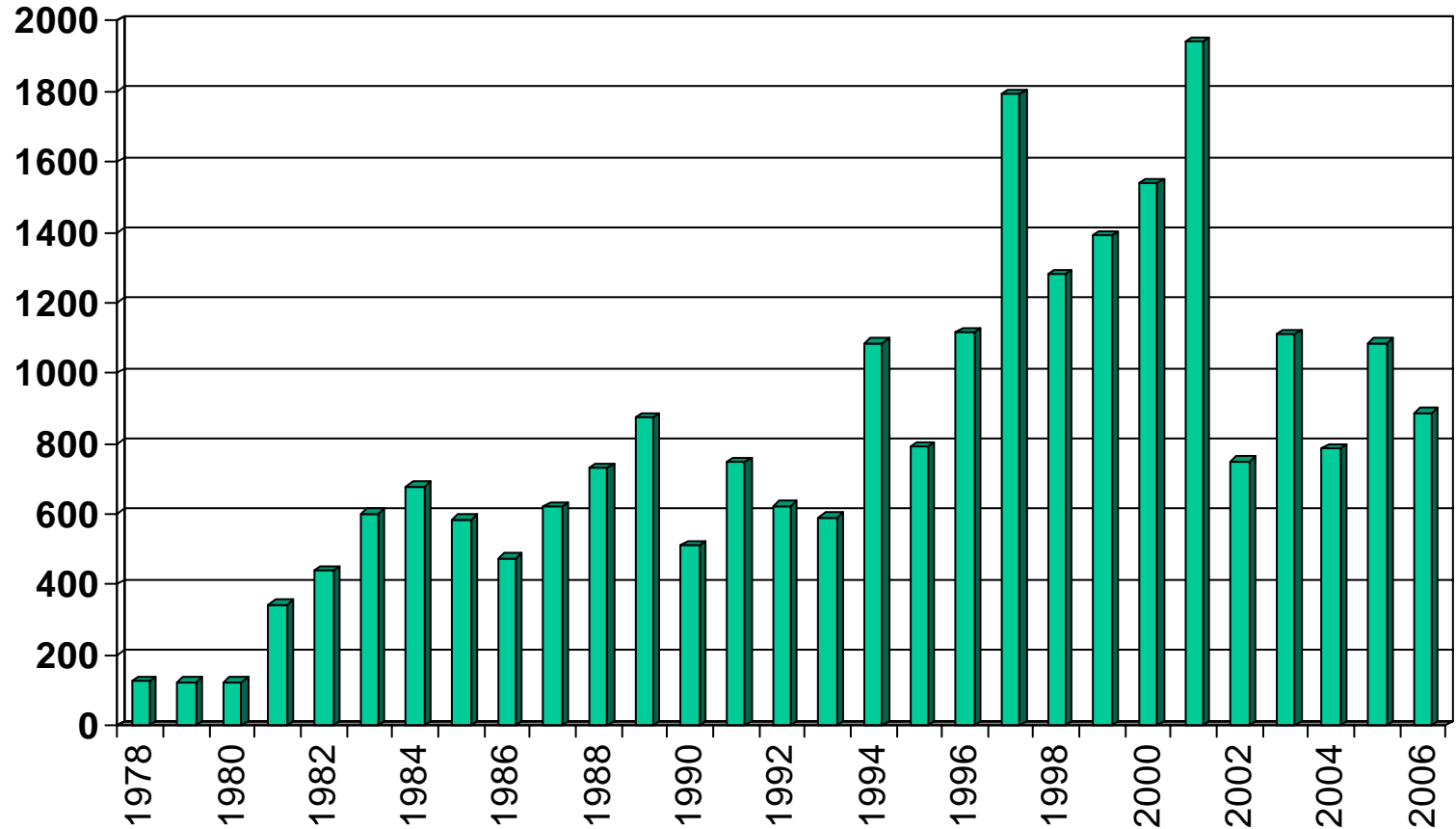
Results for the Annual Survey of UK Robot Installations for 2006



Statistics for New Robots 2006

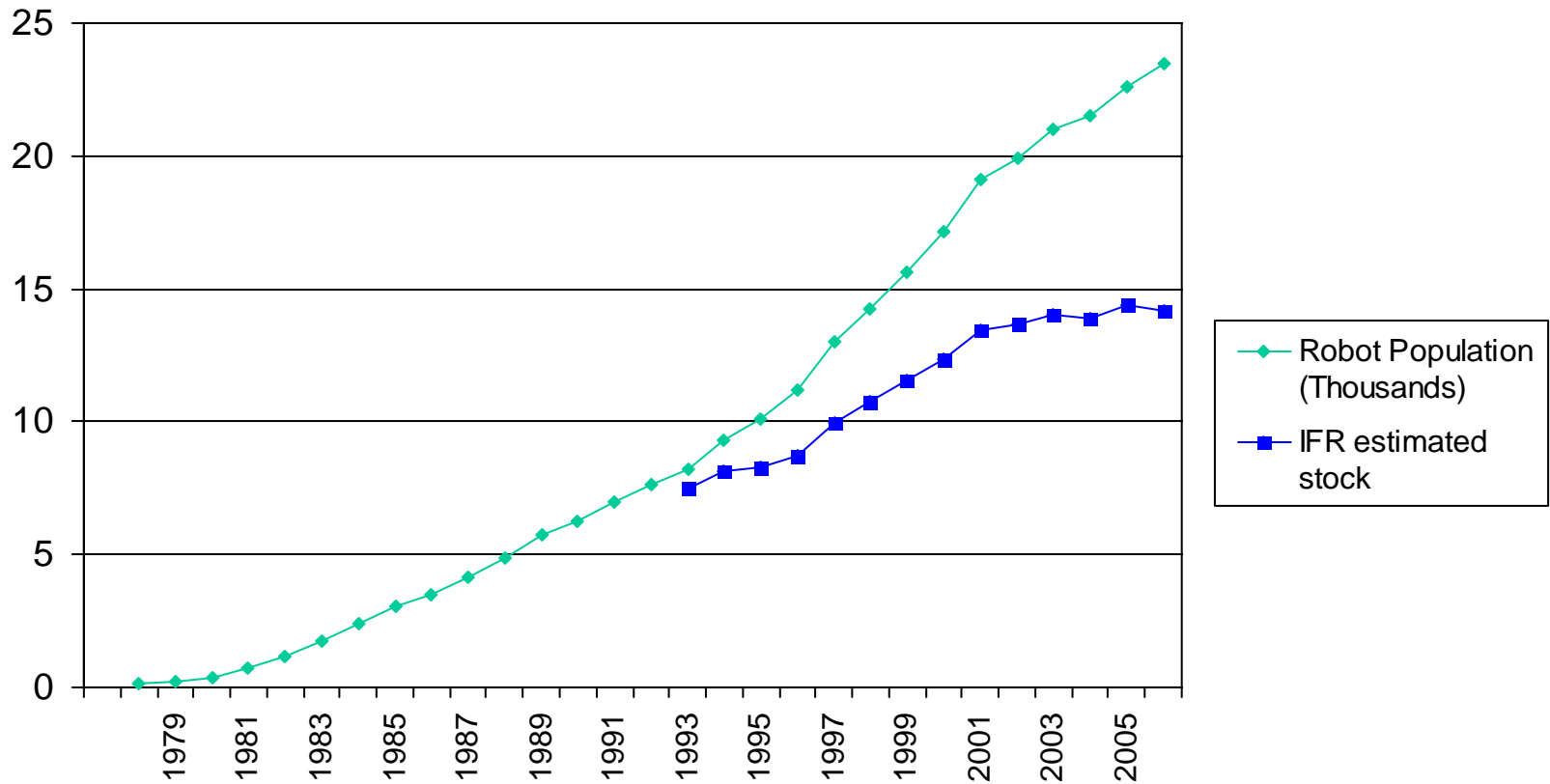
Industrial Robot Facts

Year on Year Number of Machines Installed for 2006



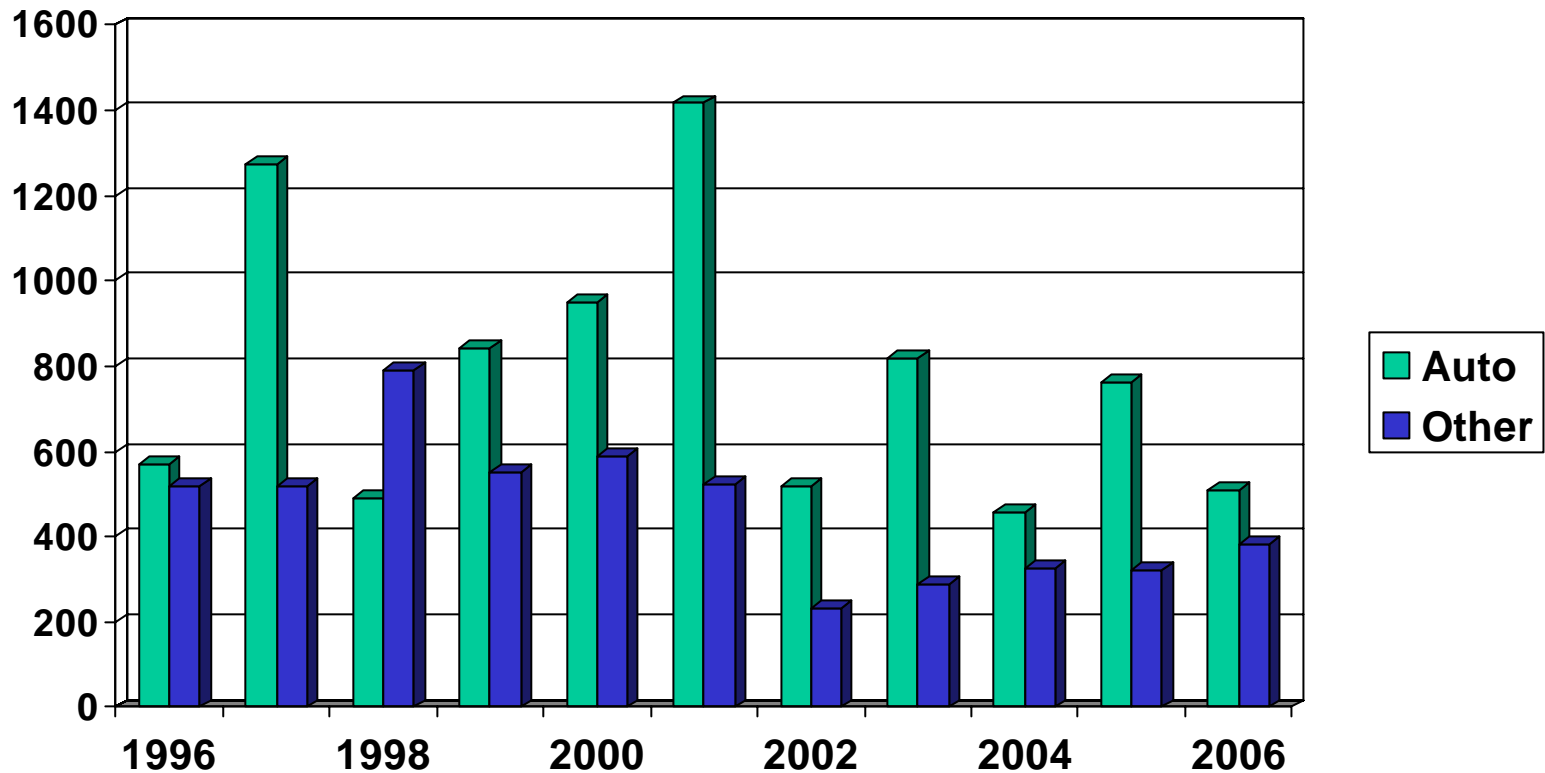
Industrial Robot Facts

UK Robot Population Growth for 2006



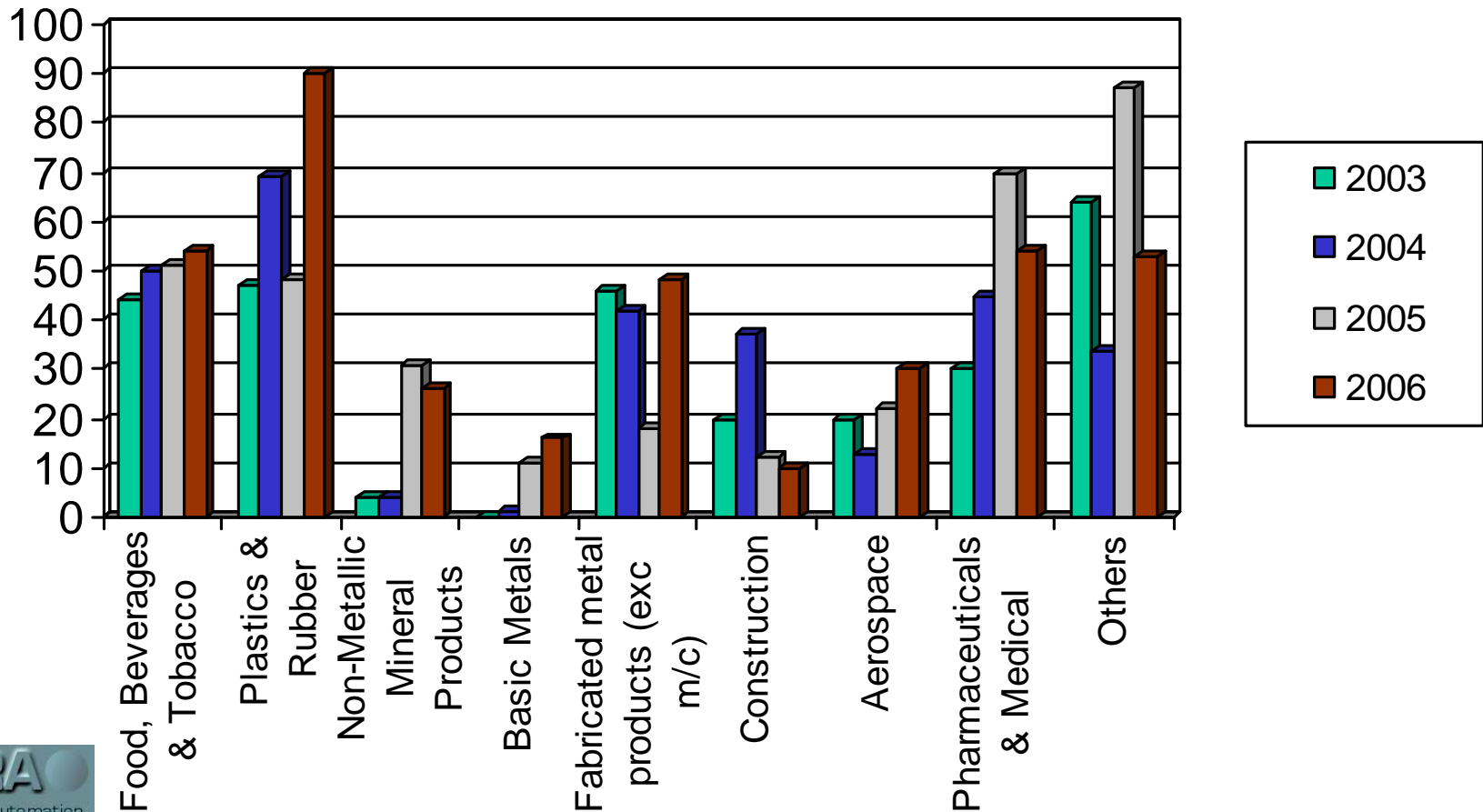
Industrial Robot Facts

Auto/Other Industry Comparison for 2006



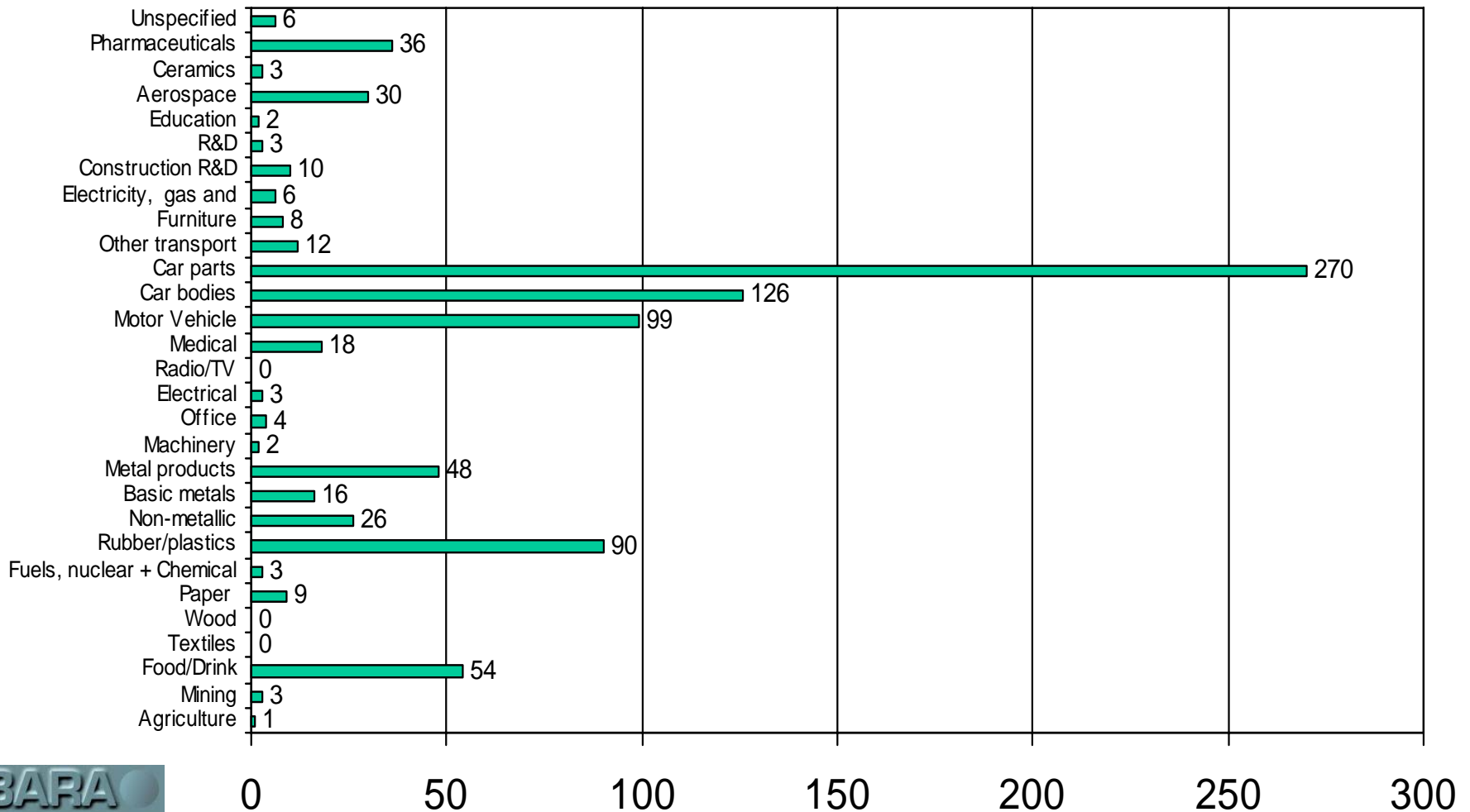
Industrial Robot Facts

2003/04/05/06 Non-Automotive Industry Analysis



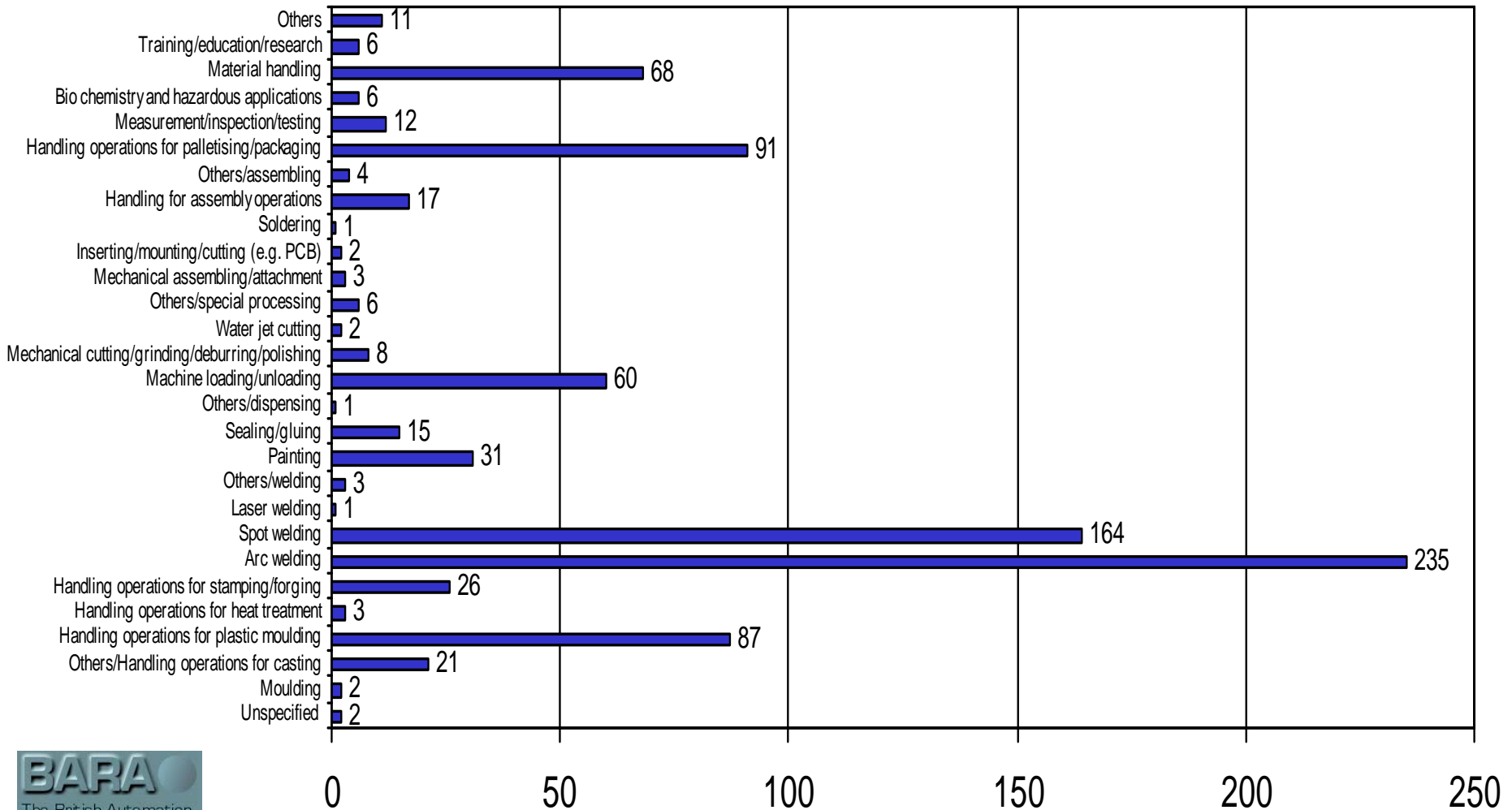
Industrial Robot Facts

UK Robot Industry Analysis to IFR Criteria for 2006



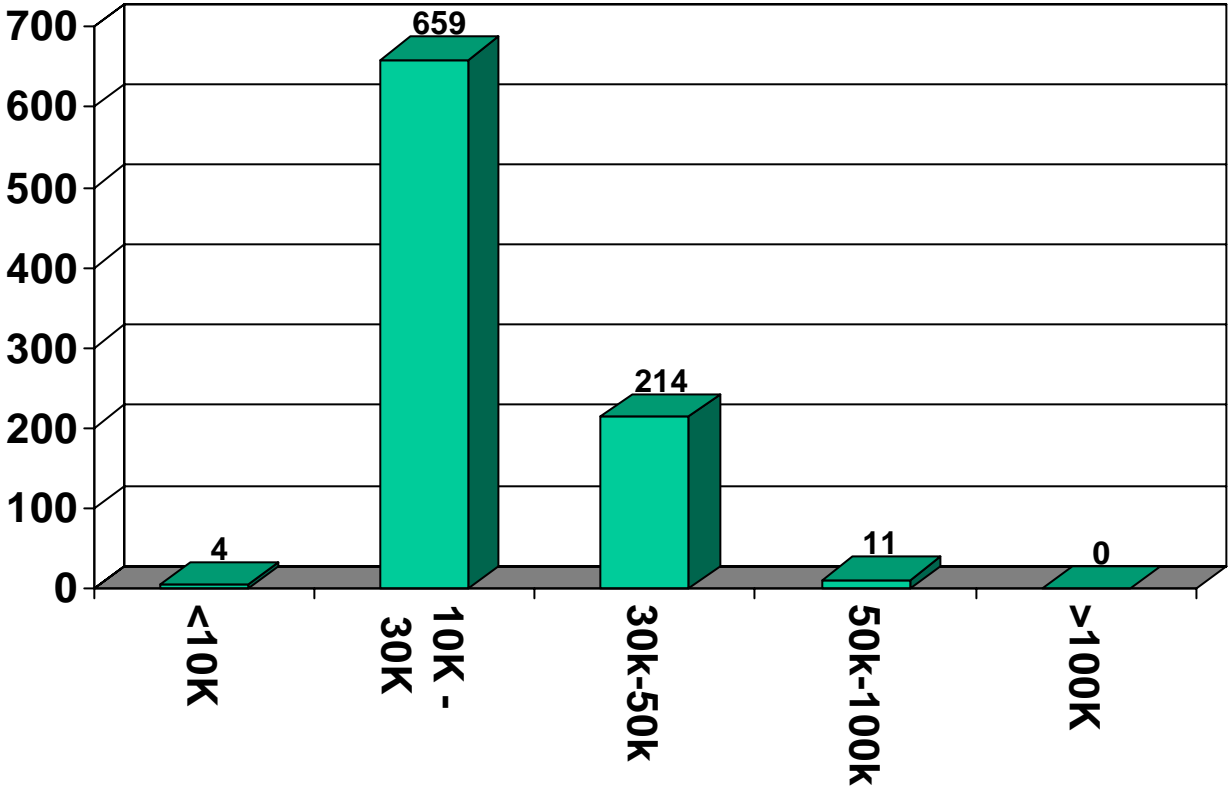
Industrial Robot Facts

UK Robot Application Analysis to IFR Criteria for 2006



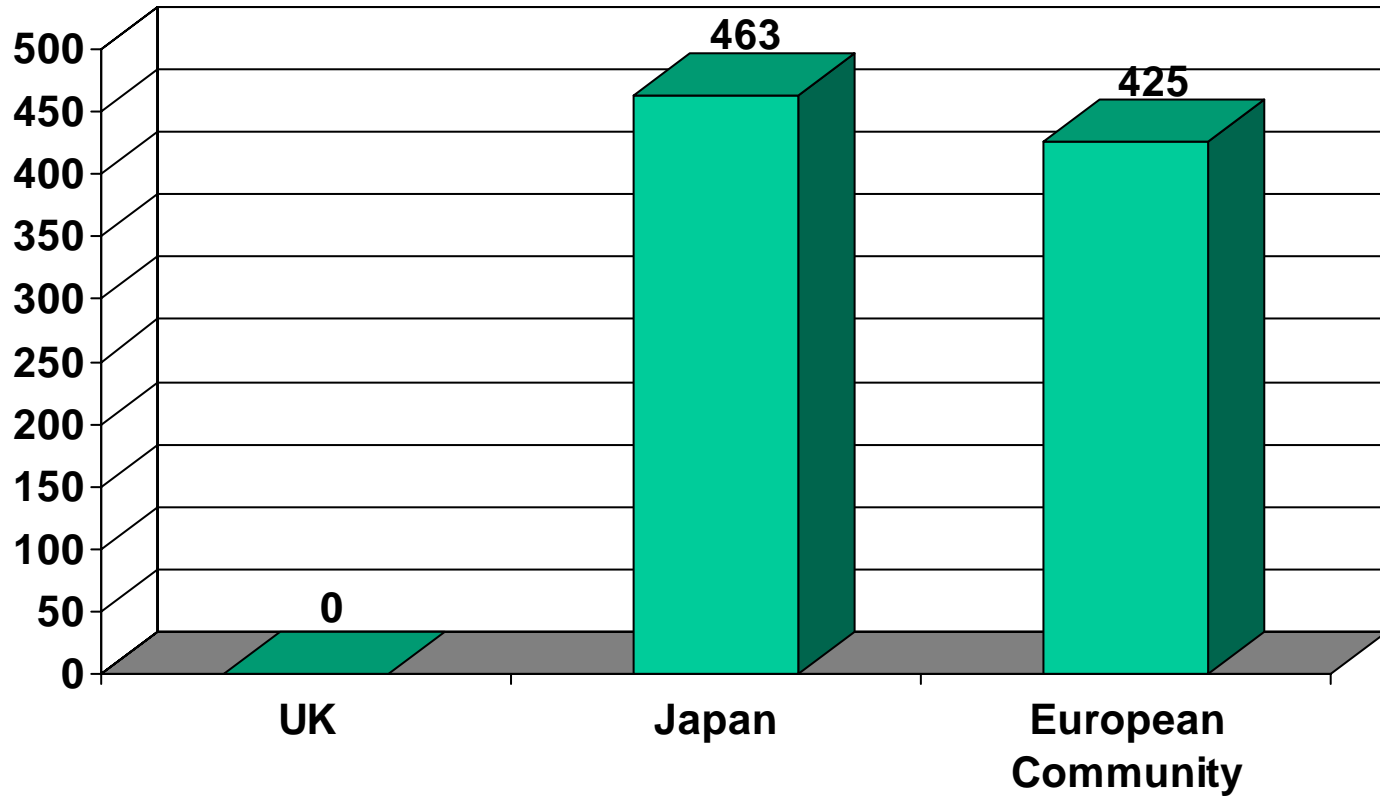
Industrial Robot Facts

UK Robot Cost Analysis for 2006

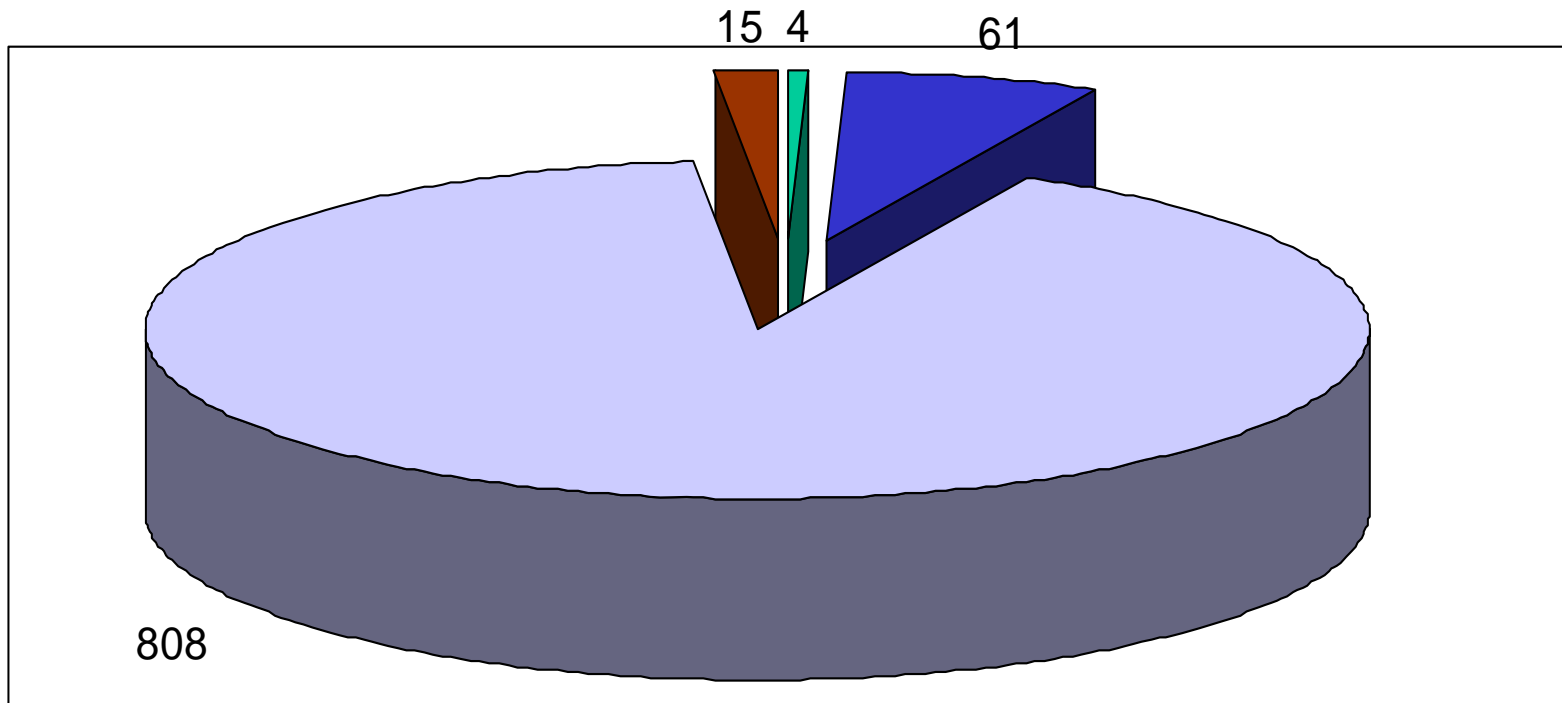


Industrial Robot Facts

Country of Origin of Robots Installed in UK for 2006



Mechanical Structure for 2006



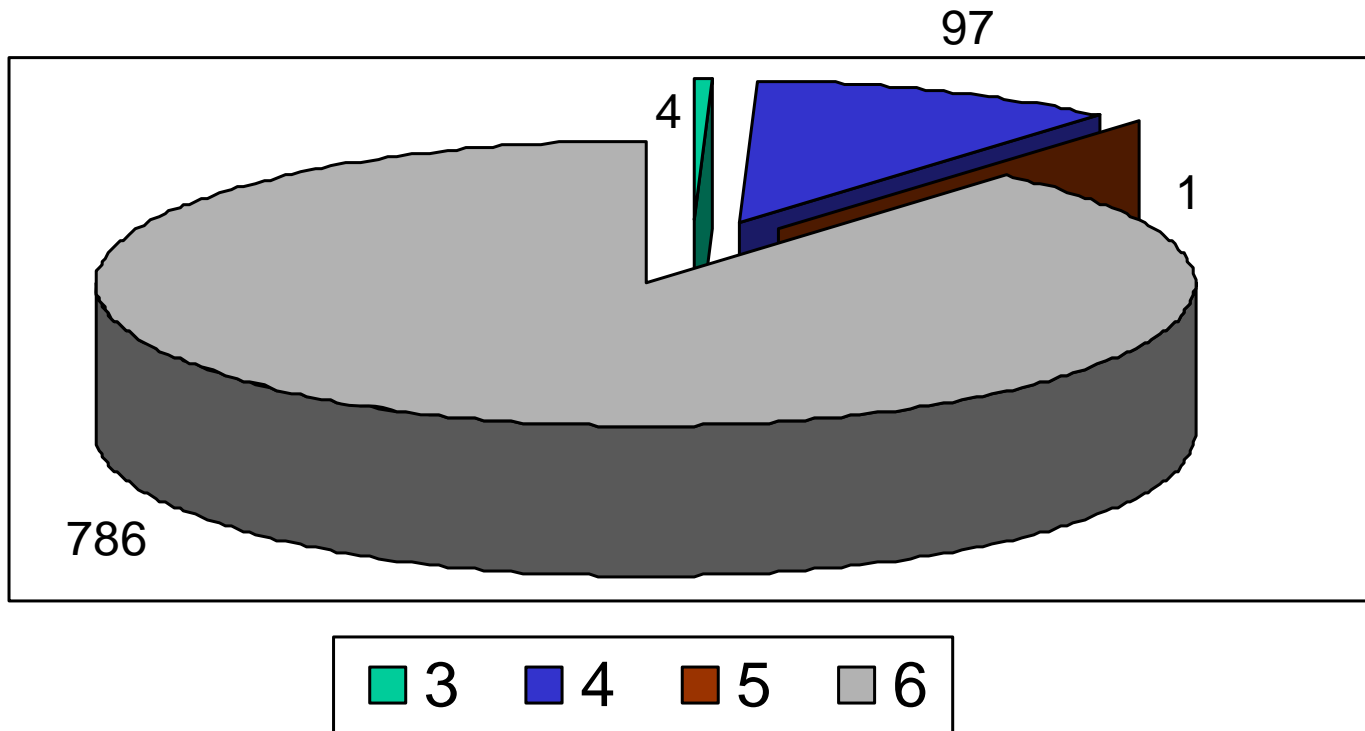
■ Cartesian/gantry

■ SCARA

■ Articulated

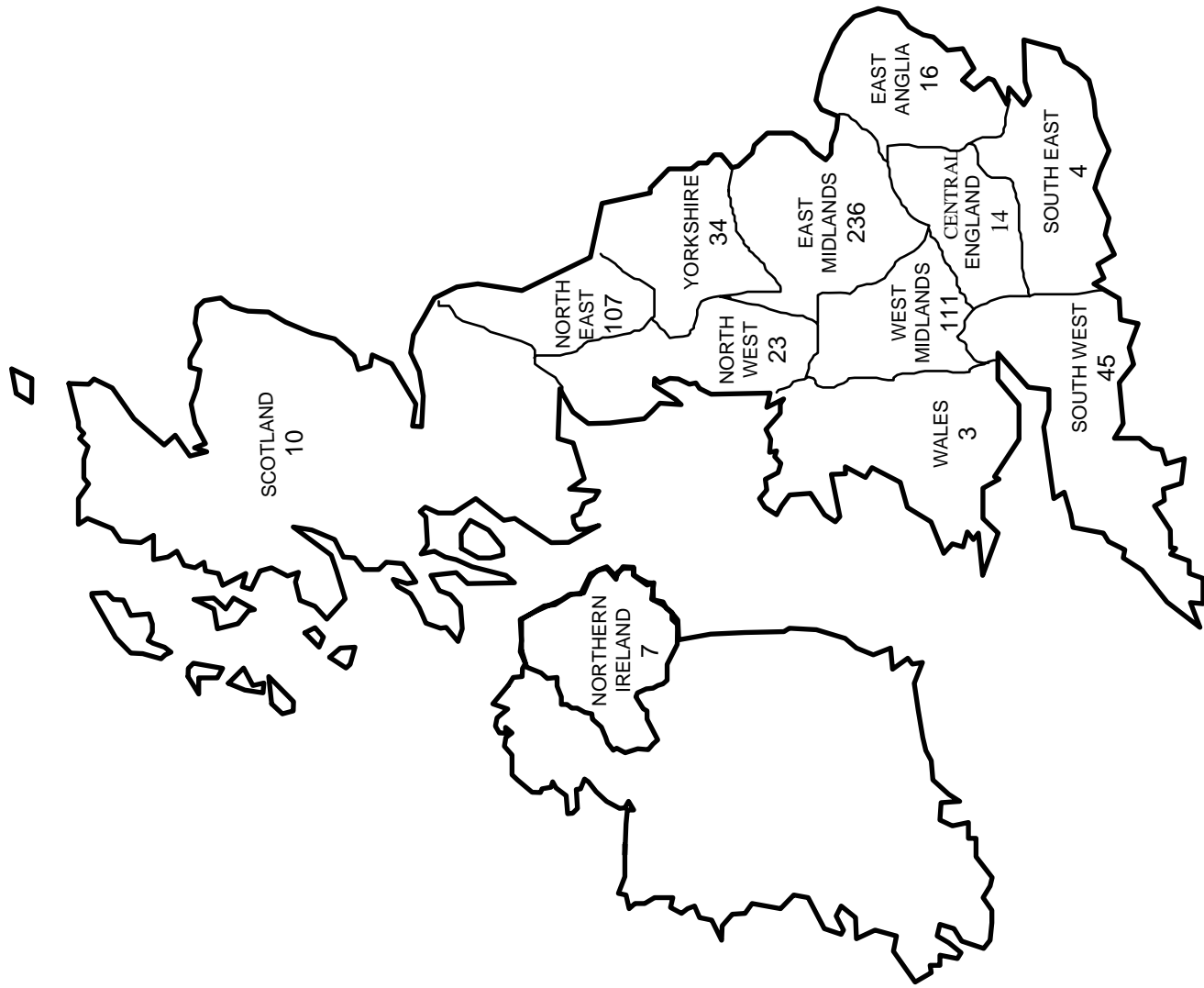
■ Parallel

Number of Axes for 2006



INDUSTRIAL ROBOT FACTS 2006

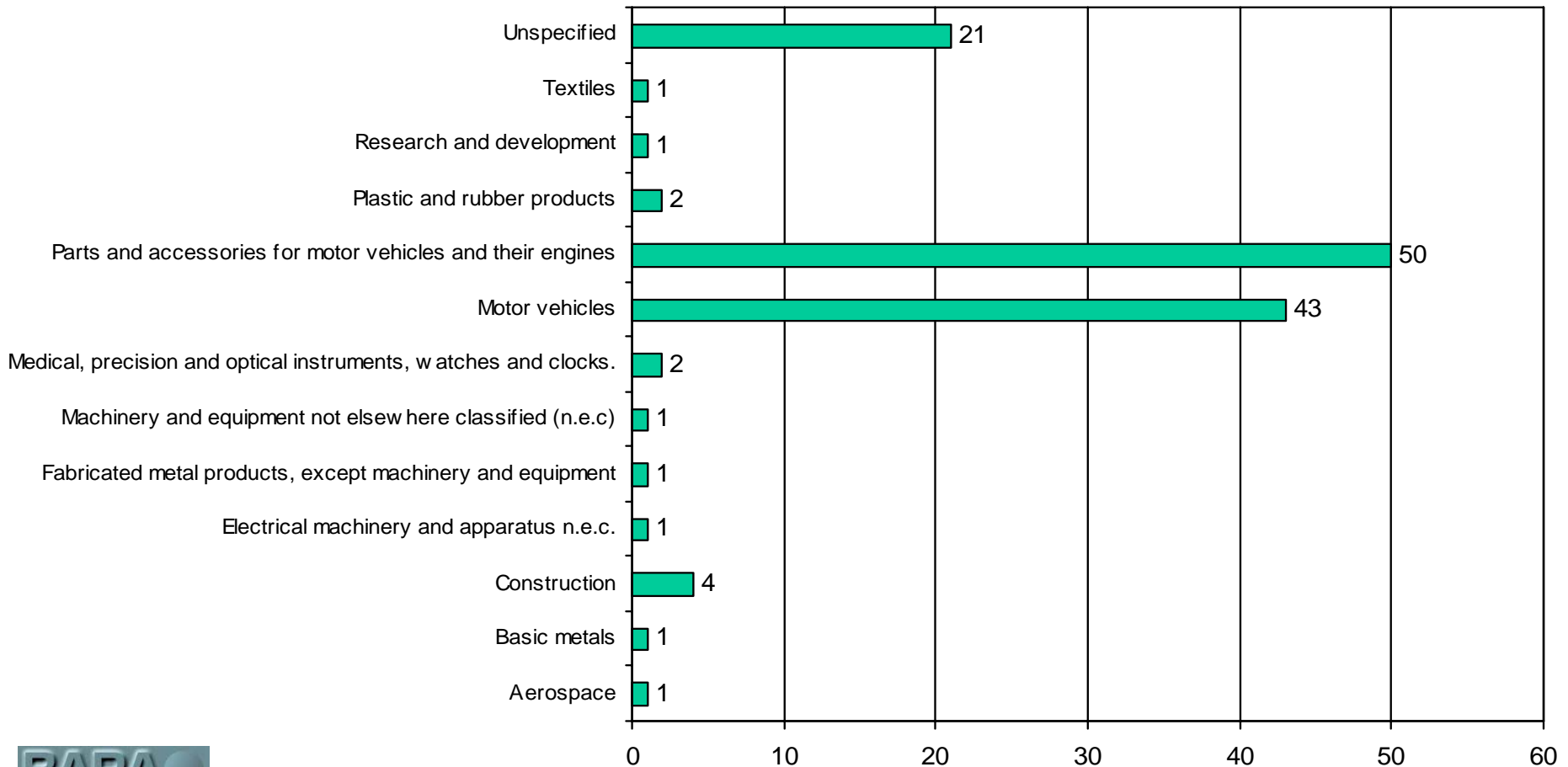
Distribution



Statistics for Refurbished Robots 2006

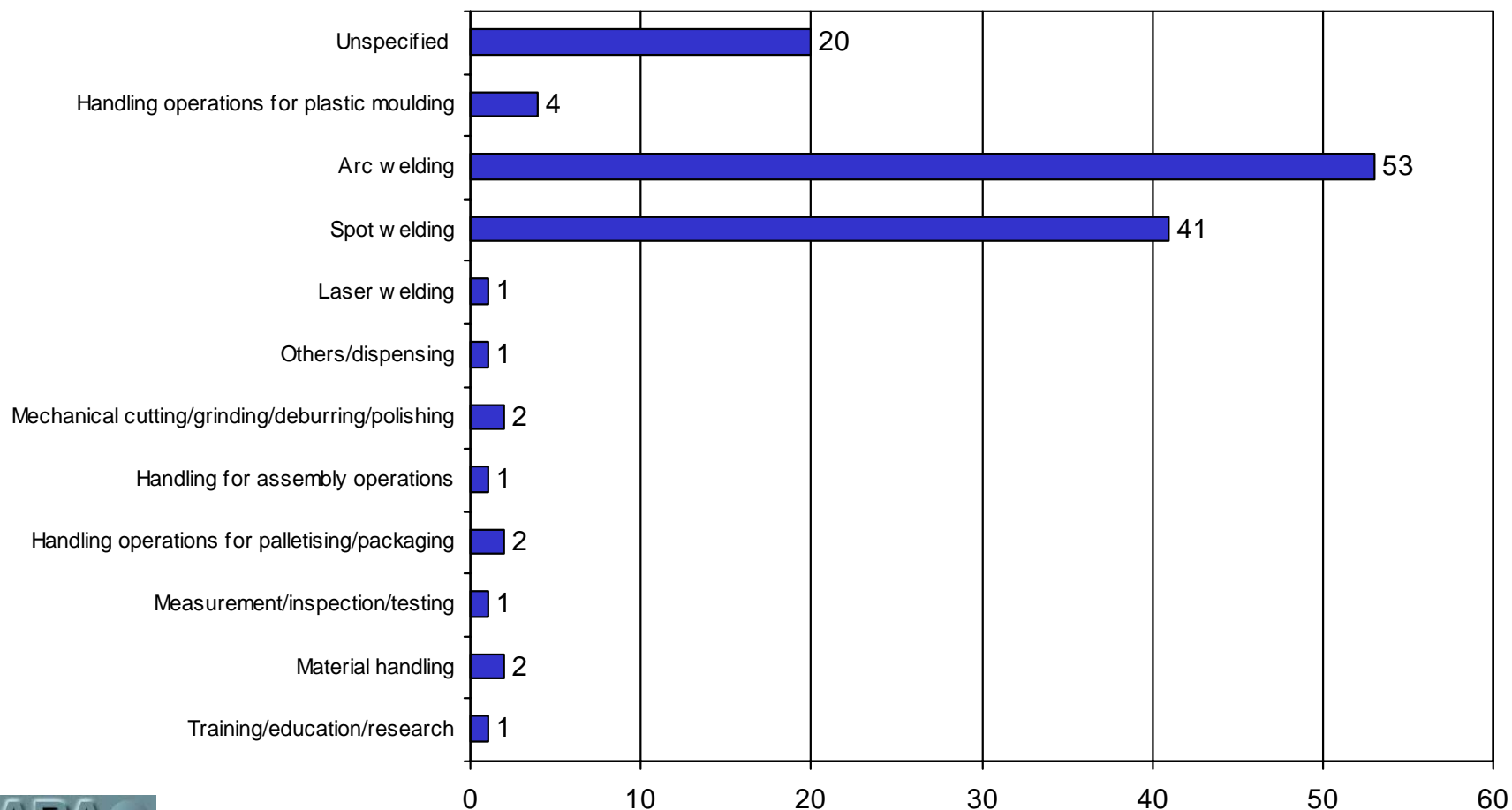
Industrial Robot Facts

UK Robot Industry Analysis to IFR Criteria for 2006 (Refurbished Robots)



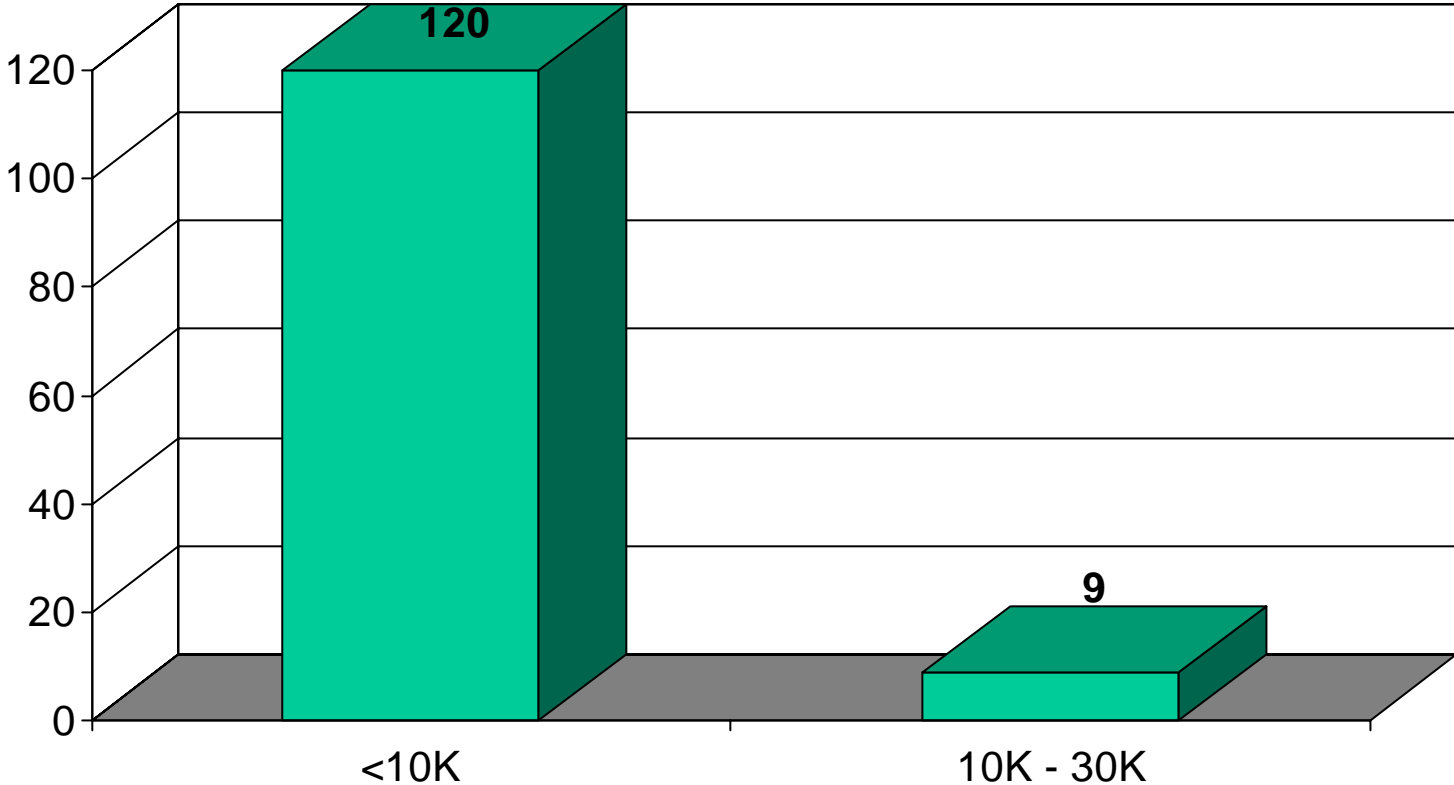
Industrial Robot Facts

UK Robot Application Analysis to IFR Criteria for 2006 (Refurbished Robots)



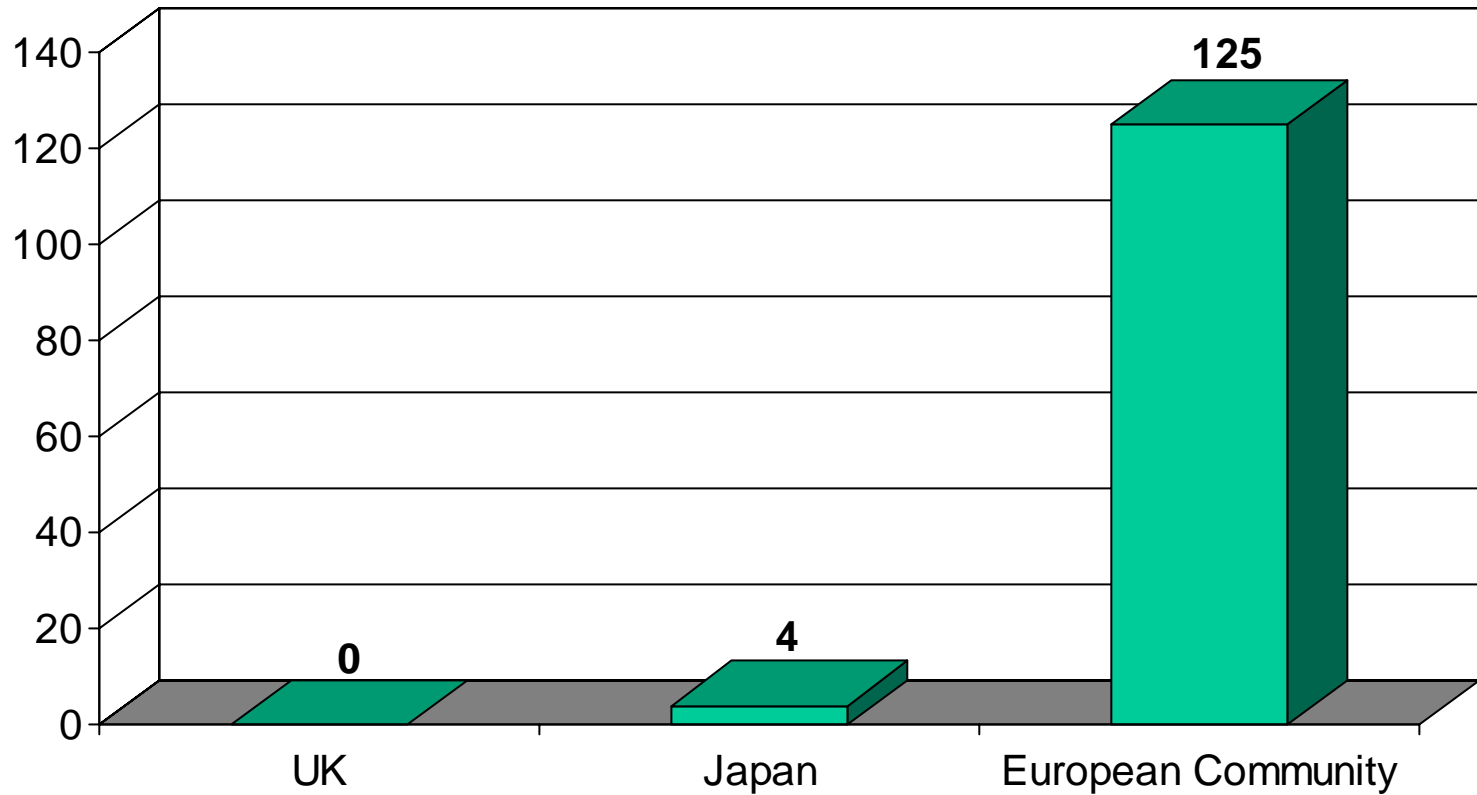
Industrial Robot Facts

UK Robot Cost Analysis for 2006 (Refurbished Robots)

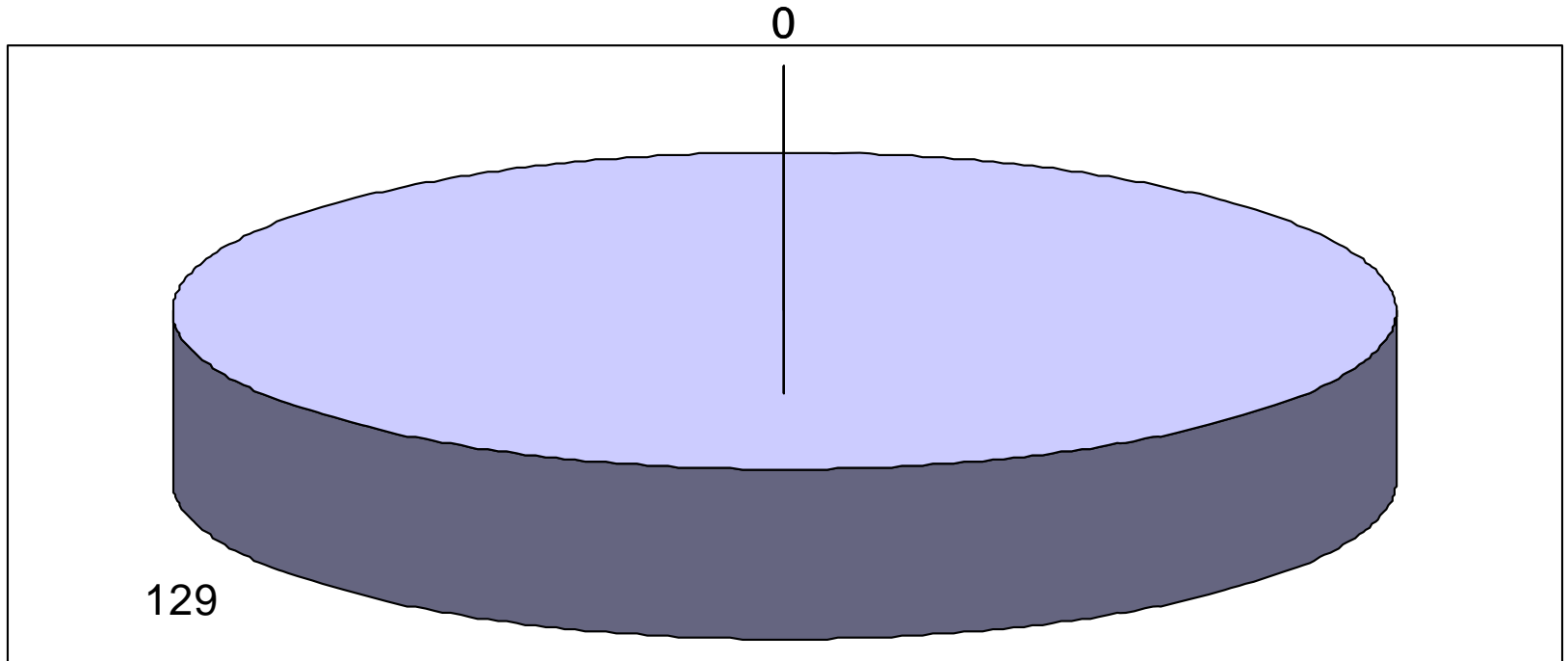


Industrial Robot Facts

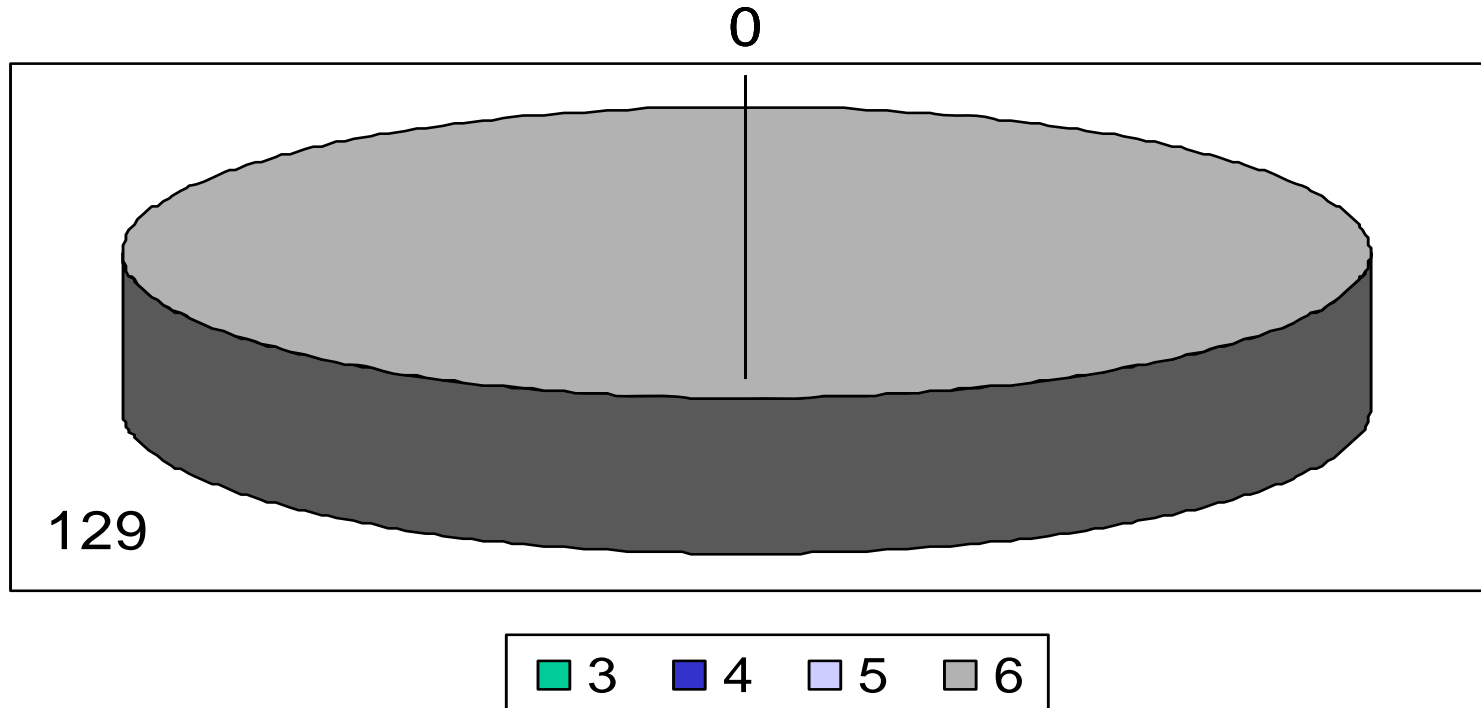
Country of Origin of Robots Installed in UK for 2006 (Refurbished Robots)



Mechanical Structure for 2006 (Refurbished Robots)



Number of Axes for 2006 (Refurbished Robots)



Data provided by

- ABB
- Cloos
- Fanuc
- Kawasaki
- Kuka
- Motoman
- Naachi
- Olympus
- Staubli
- System Devices
- Toshiba