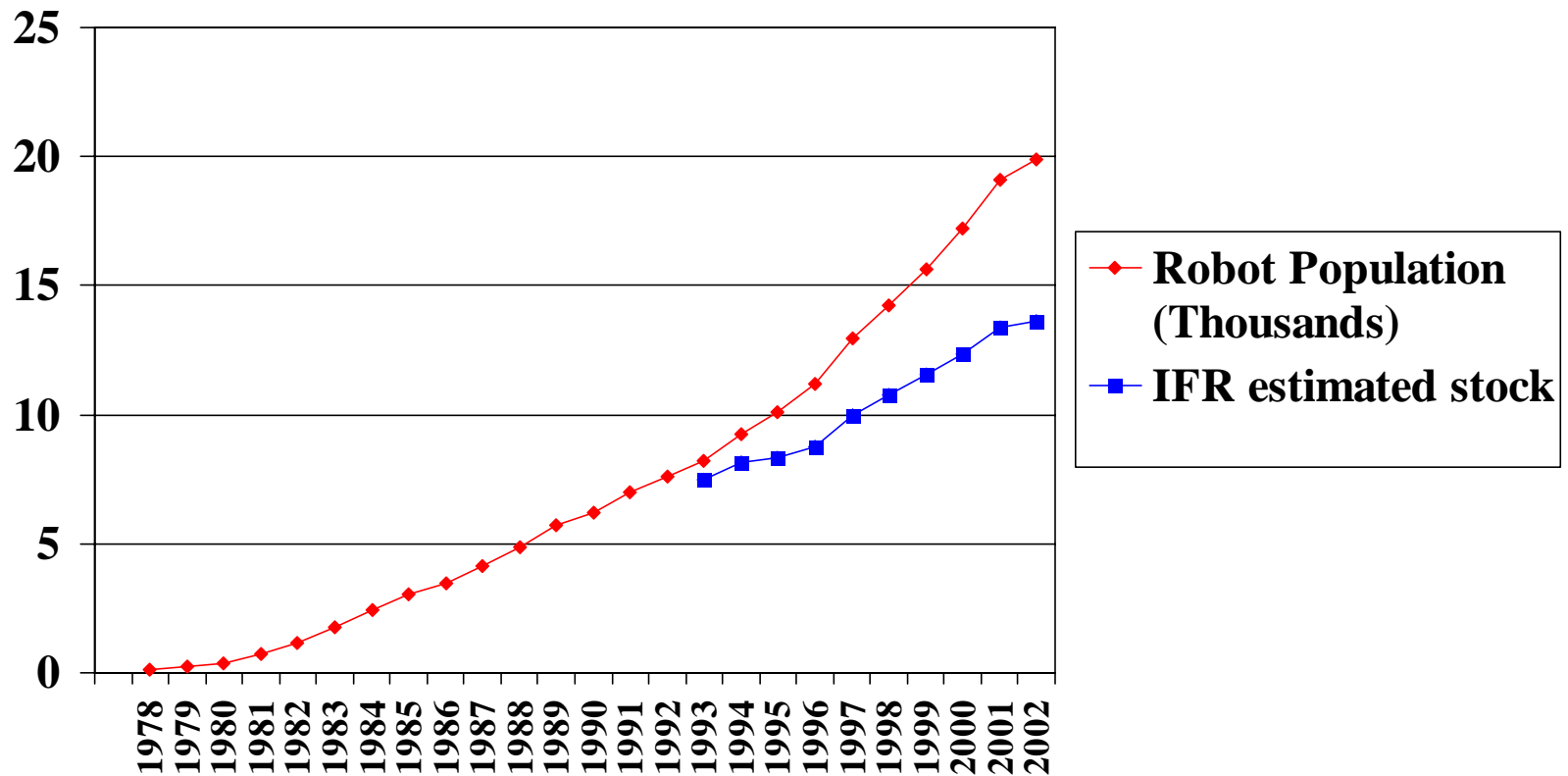


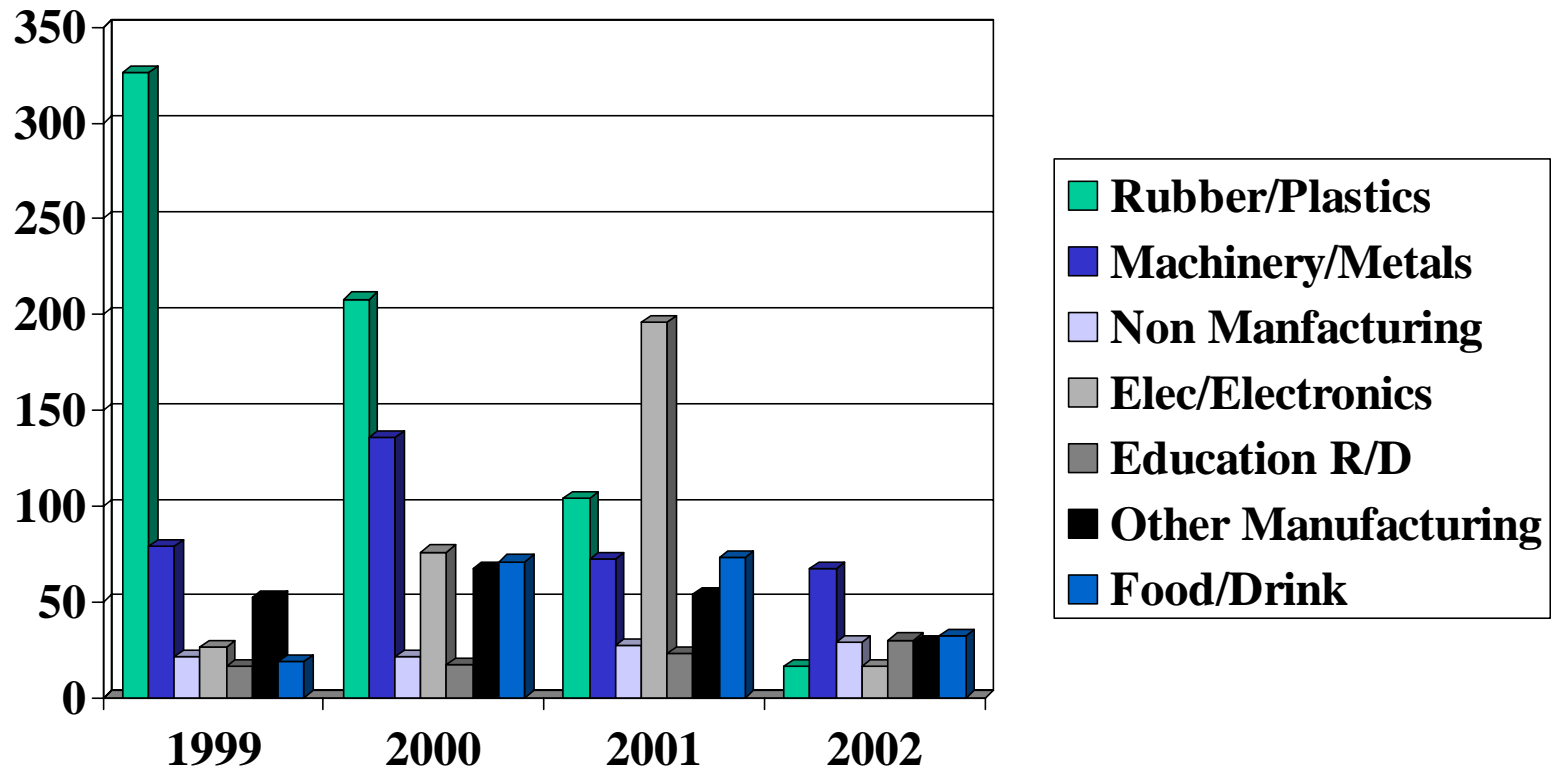
Industrial Robot Facts

UK Robot Population Growth



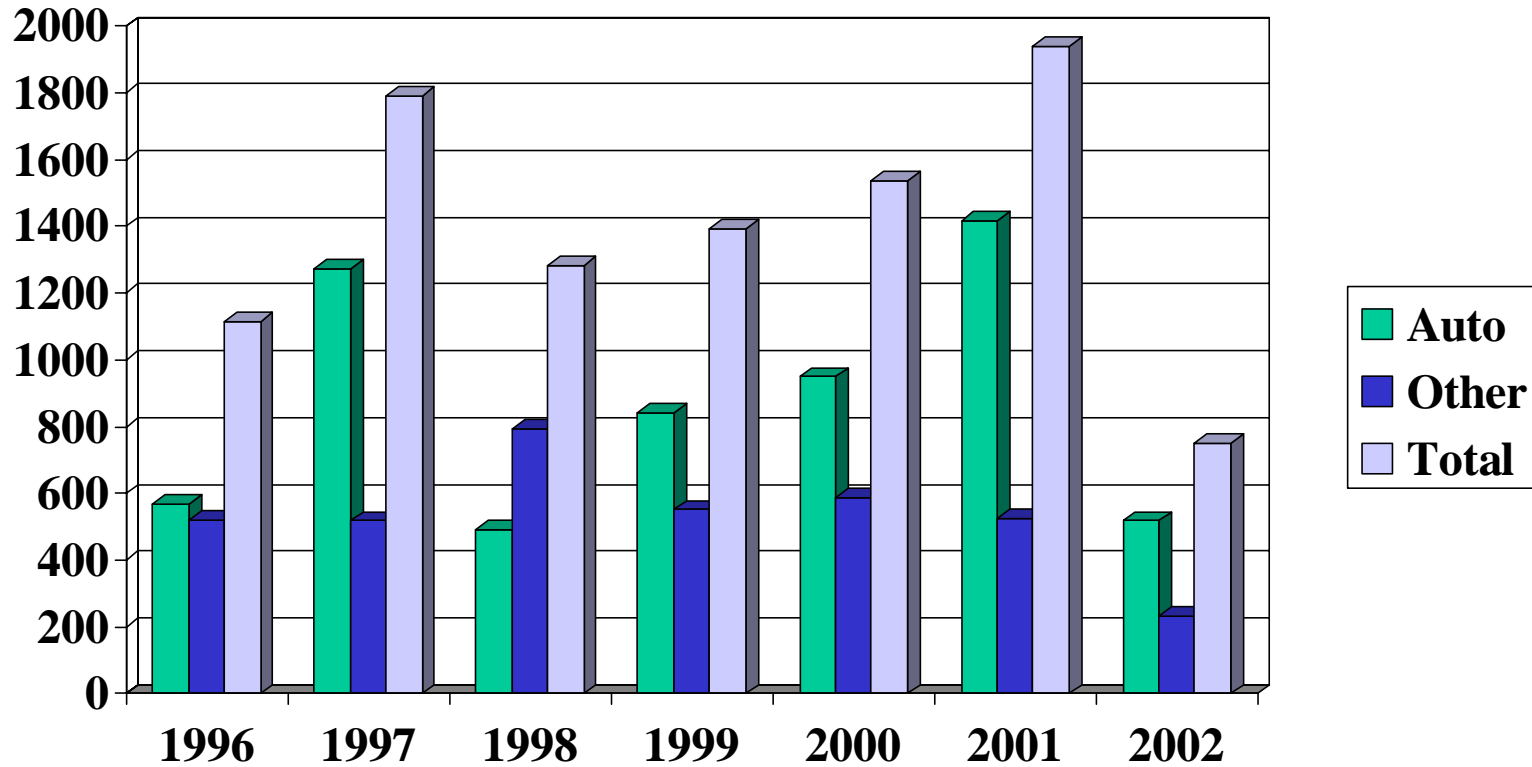
Industrial Robot Facts

3 year non-automotive industry comparison



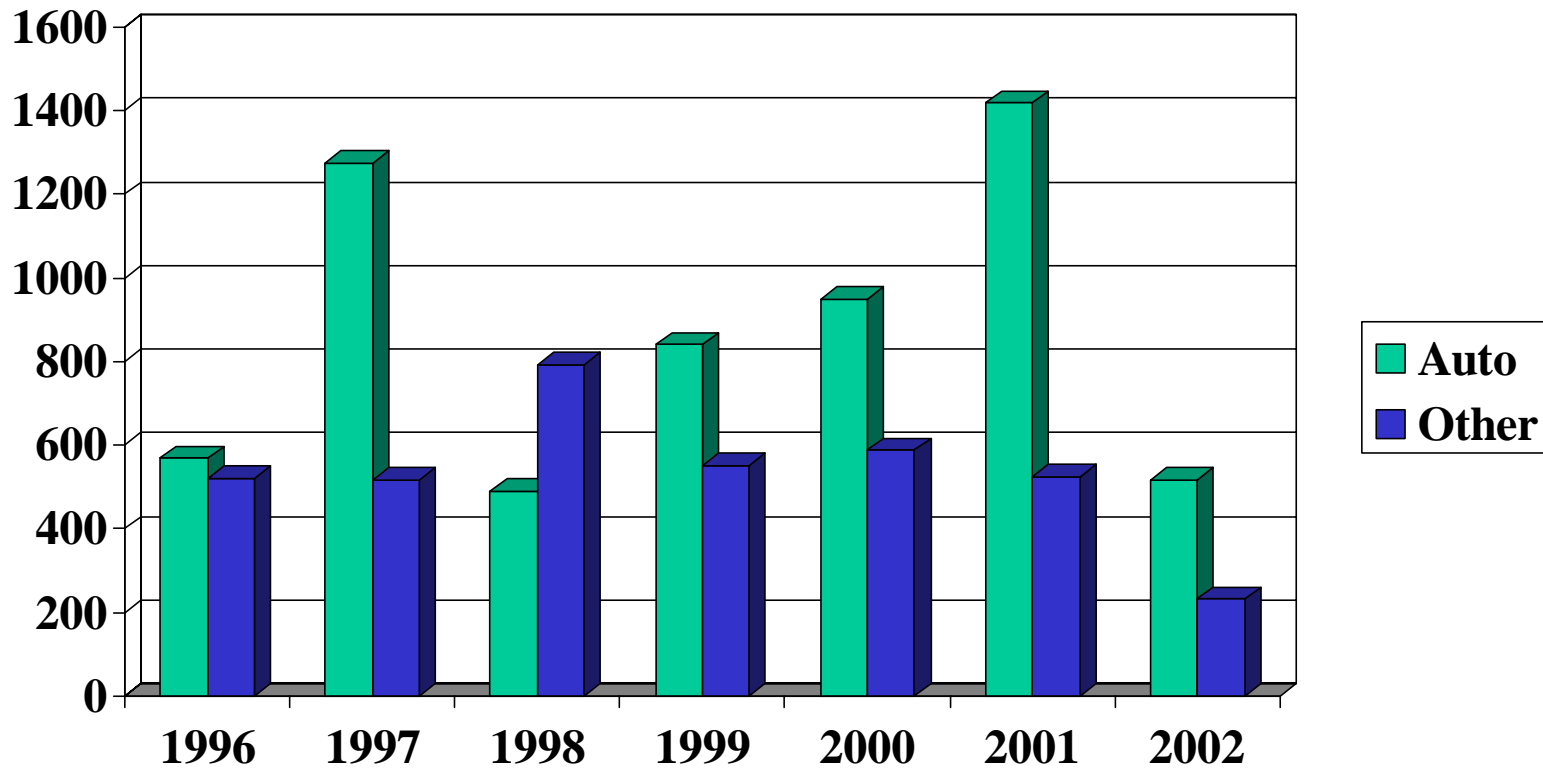
Industrial Robot Facts

Auto/other industry comparison



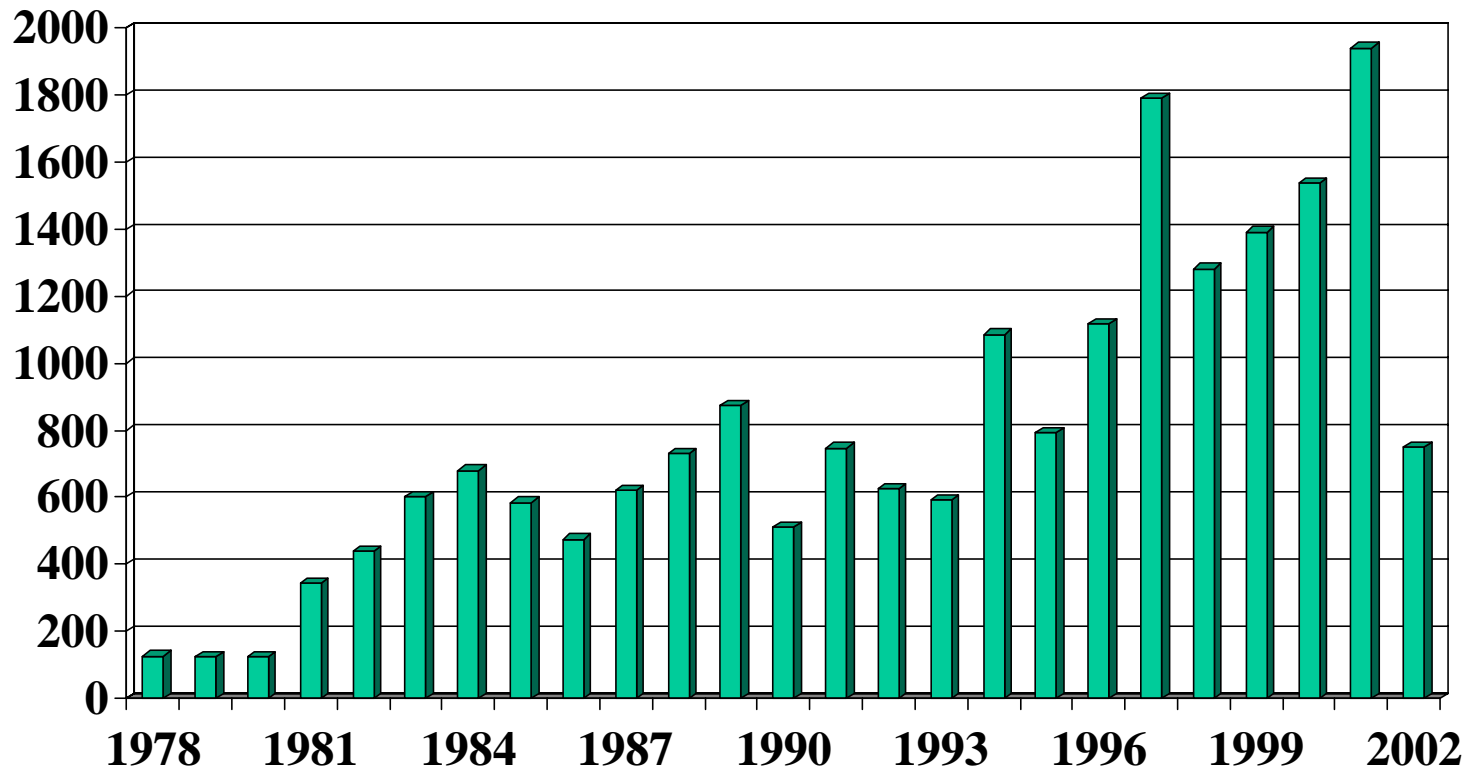
Industrial Robot Facts

Auto/other industry comparison



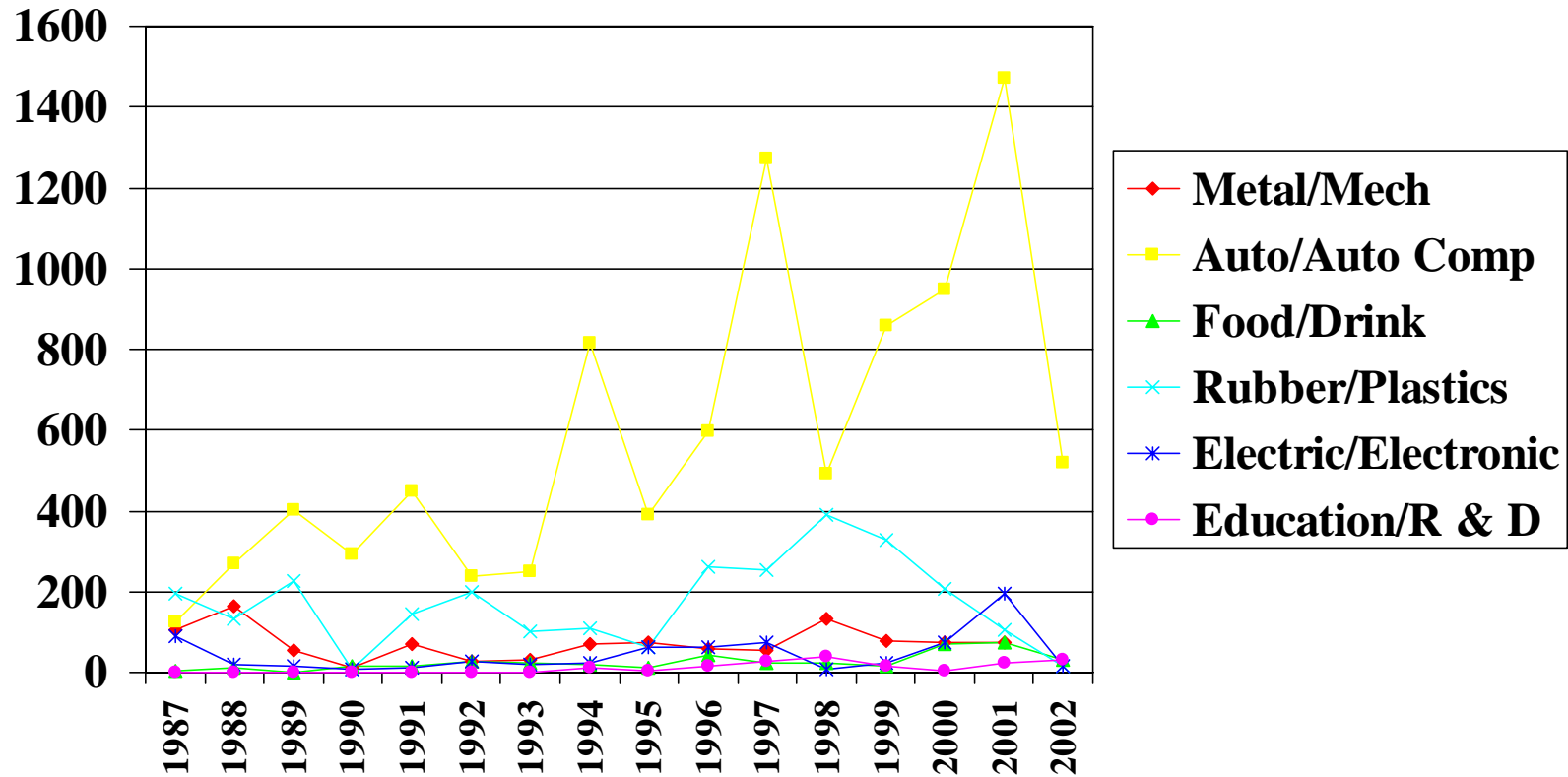
INDUSTRIAL ROBOT FACTS

Year on Year Number of Machines Sold



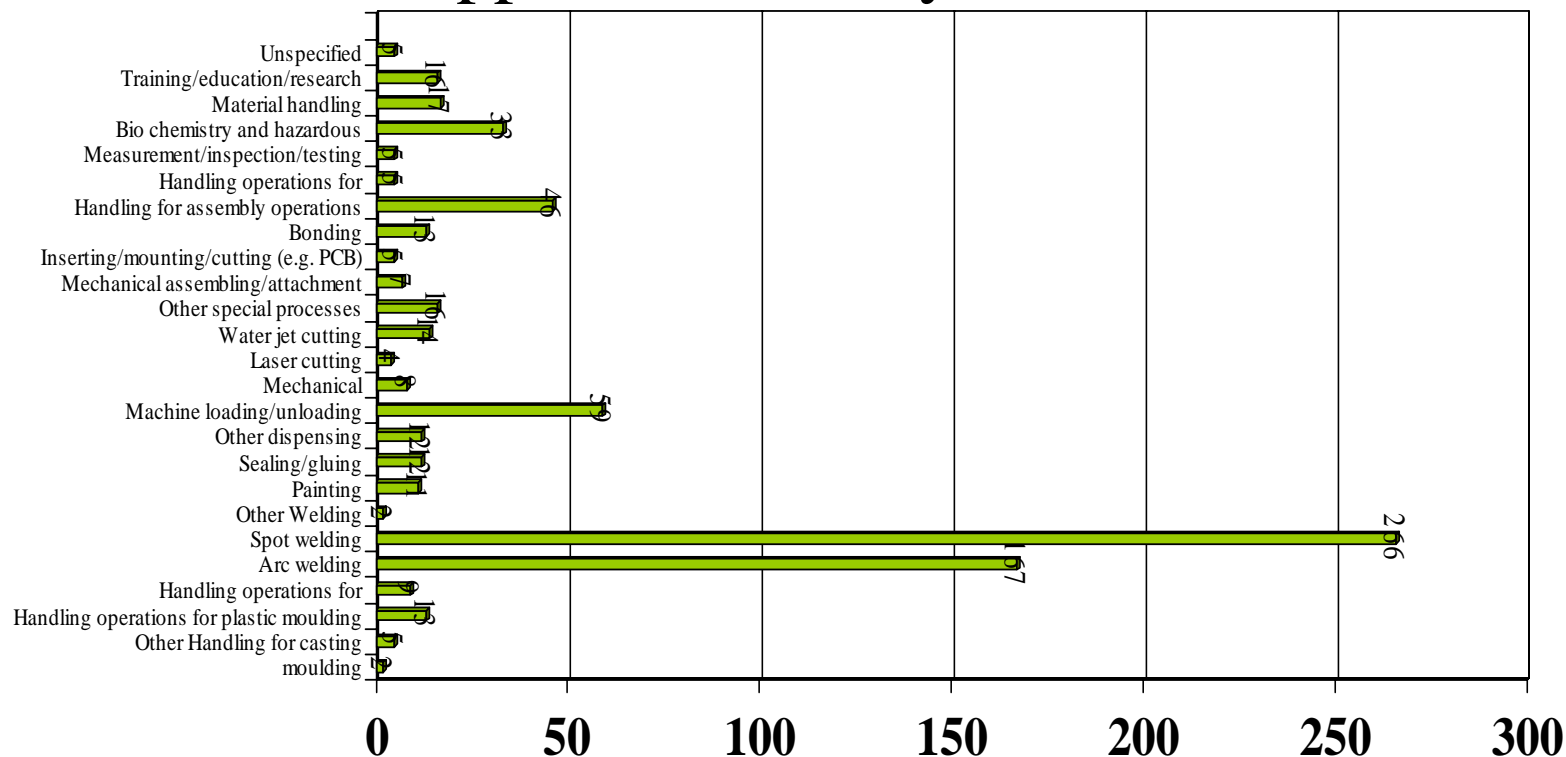
INDUSTRIAL ROBOT FACTS

Year on Year Industry Comparison



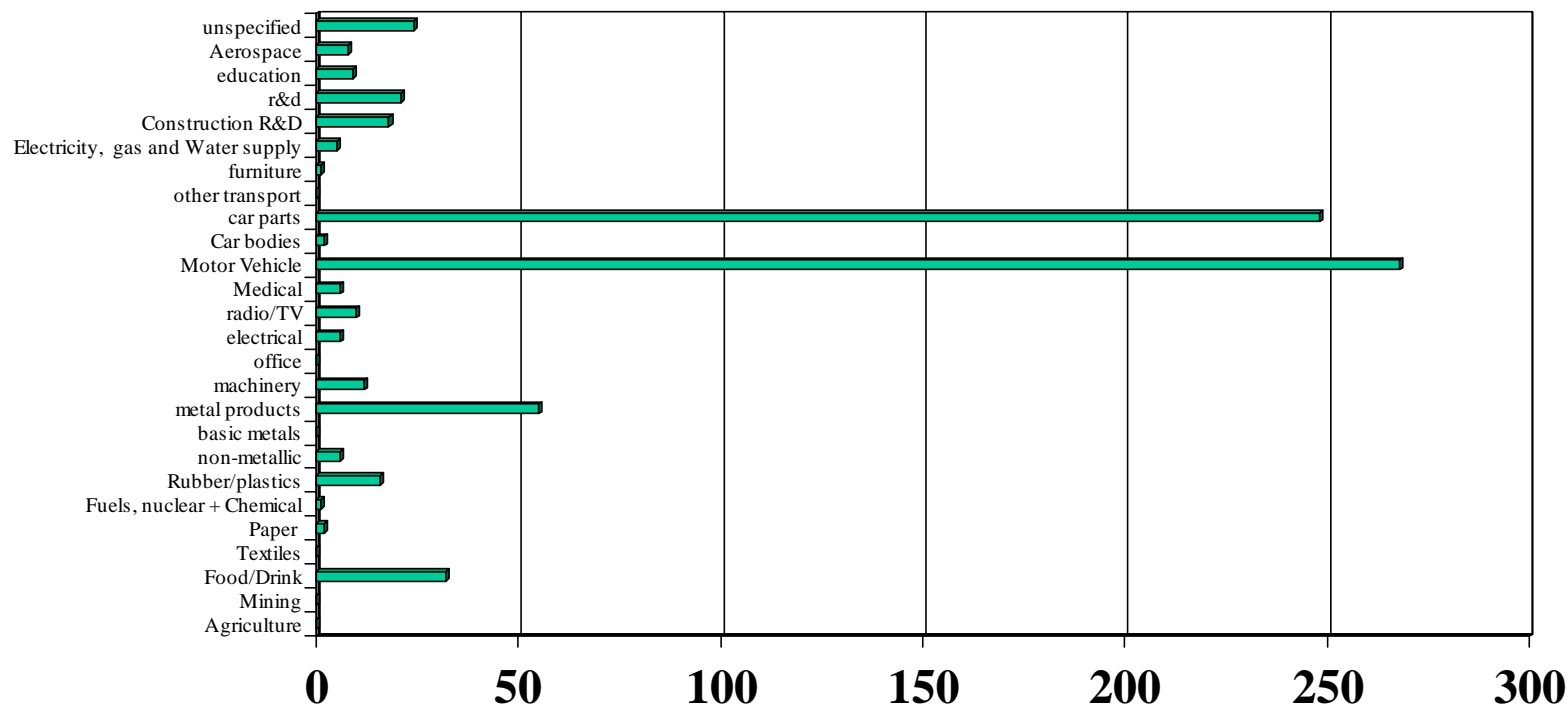
INDUSTRIAL ROBOT FACTS

UK Robot application Analysis to IFR Criteria



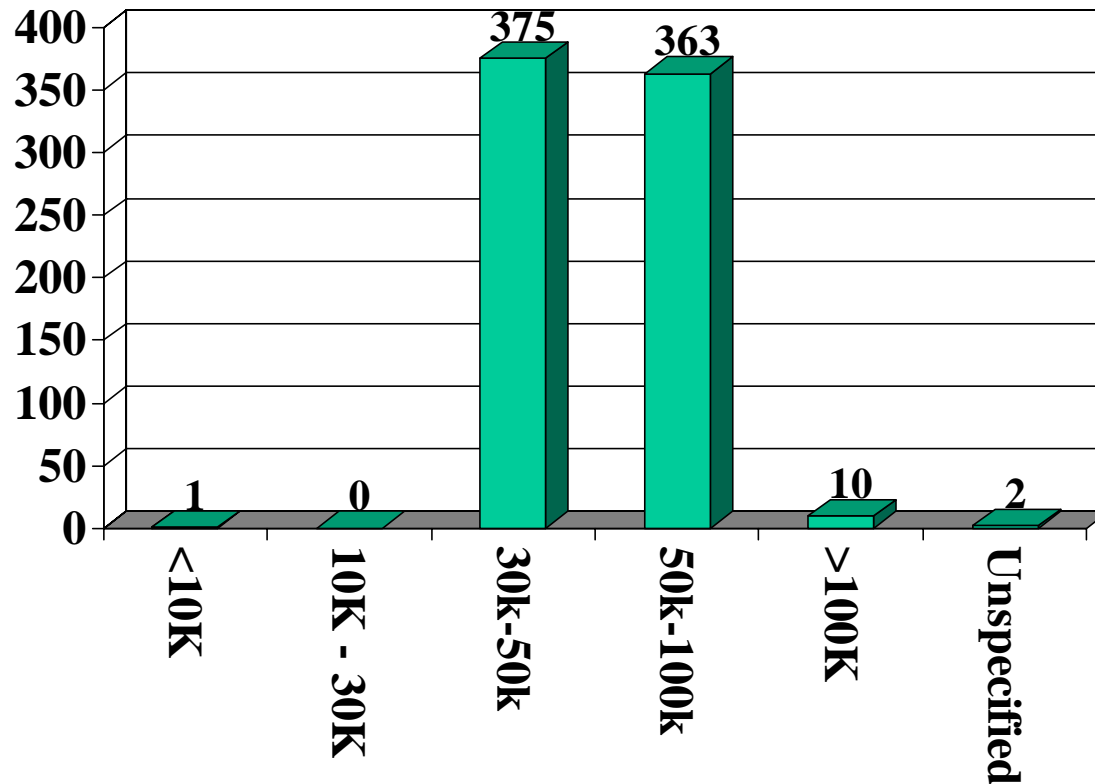
INDUSTRIAL ROBOT FACTS

UK Robot Industry Analysis to IFR Criteria



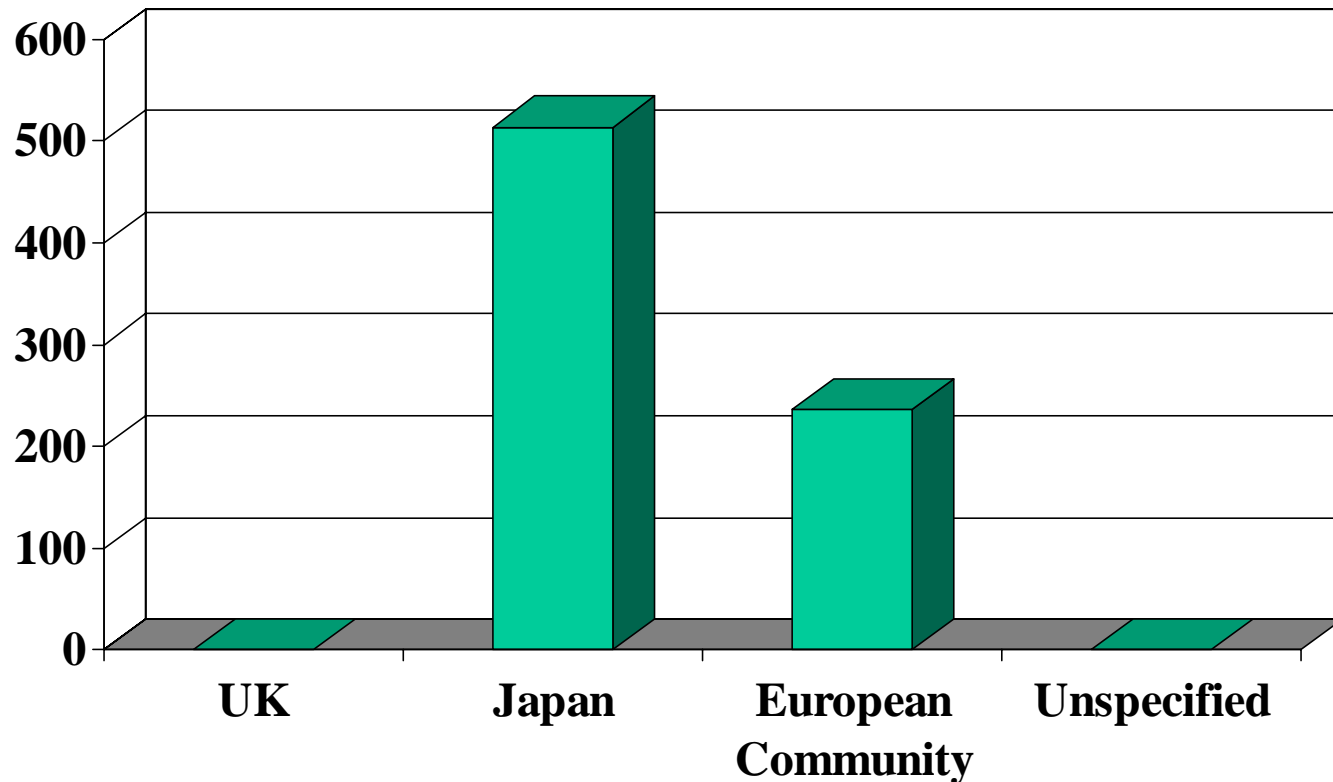
INDUSTRIAL ROBOT FACTS

UK Robot Cost Analysis



INDUSTRIAL ROBOT FACTS

Country of Origin of Robots Installed in UK



Mechanical Structure

