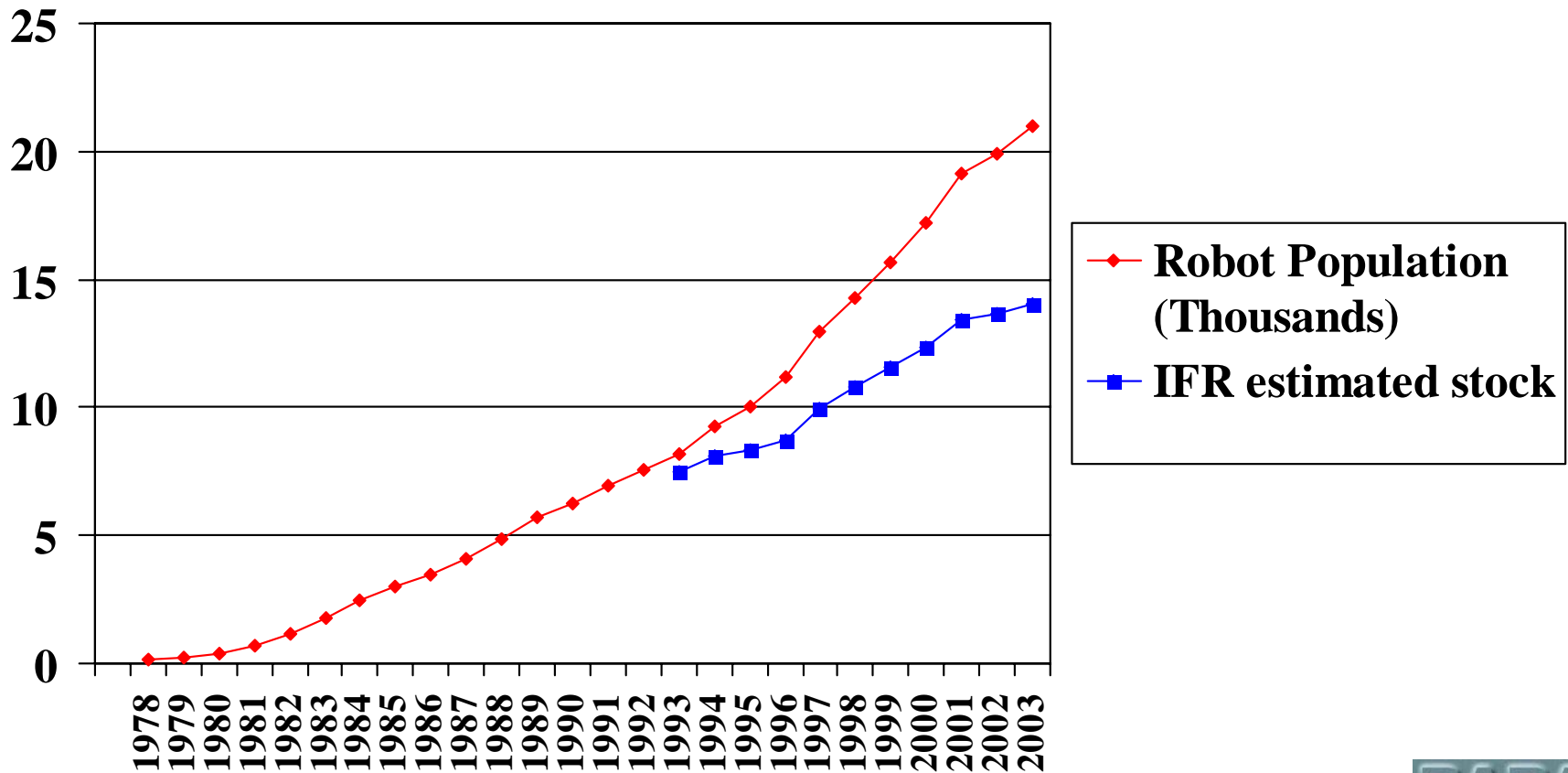


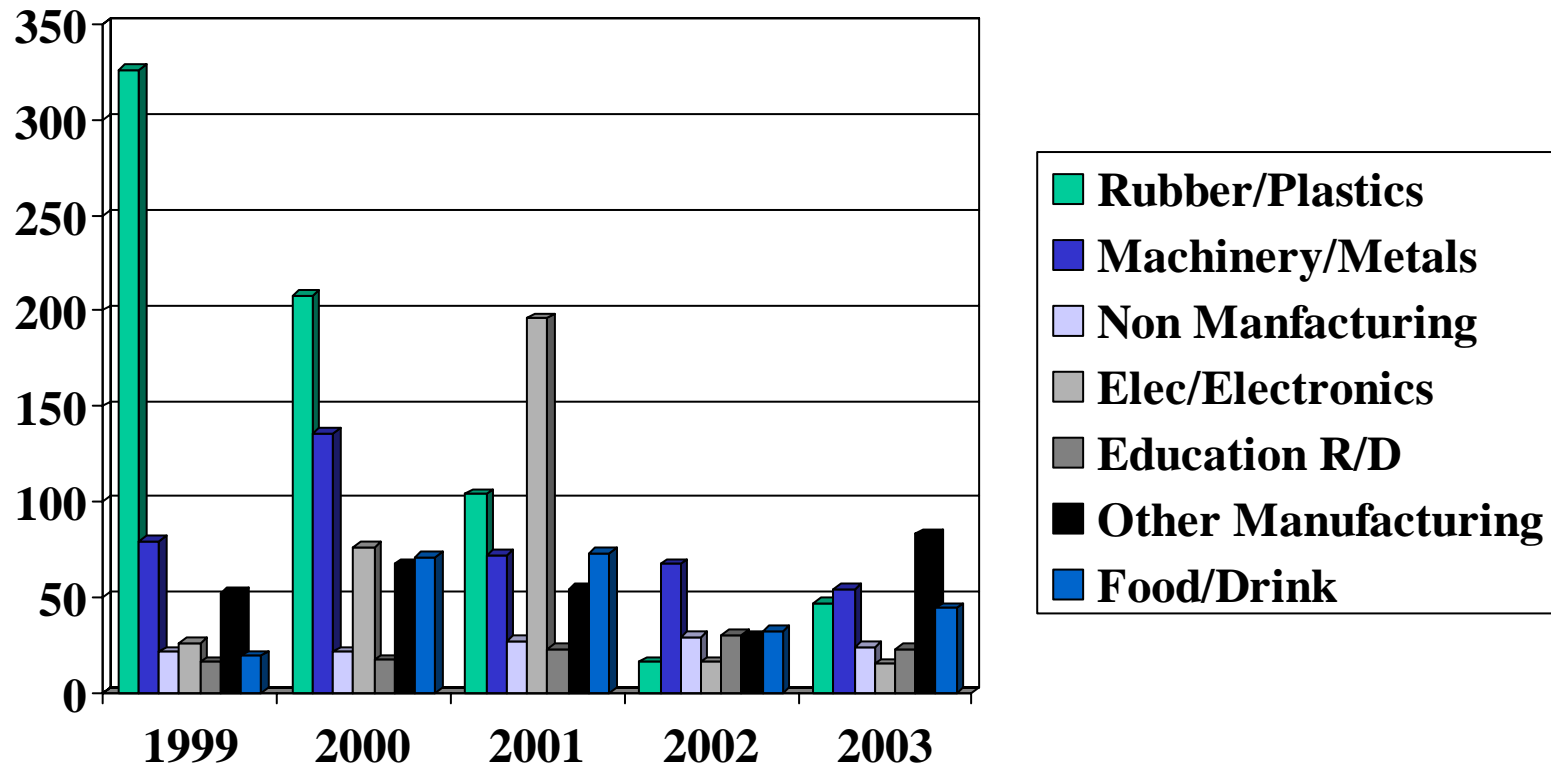
# Industrial Robot Facts

## UK Robot Population Growth



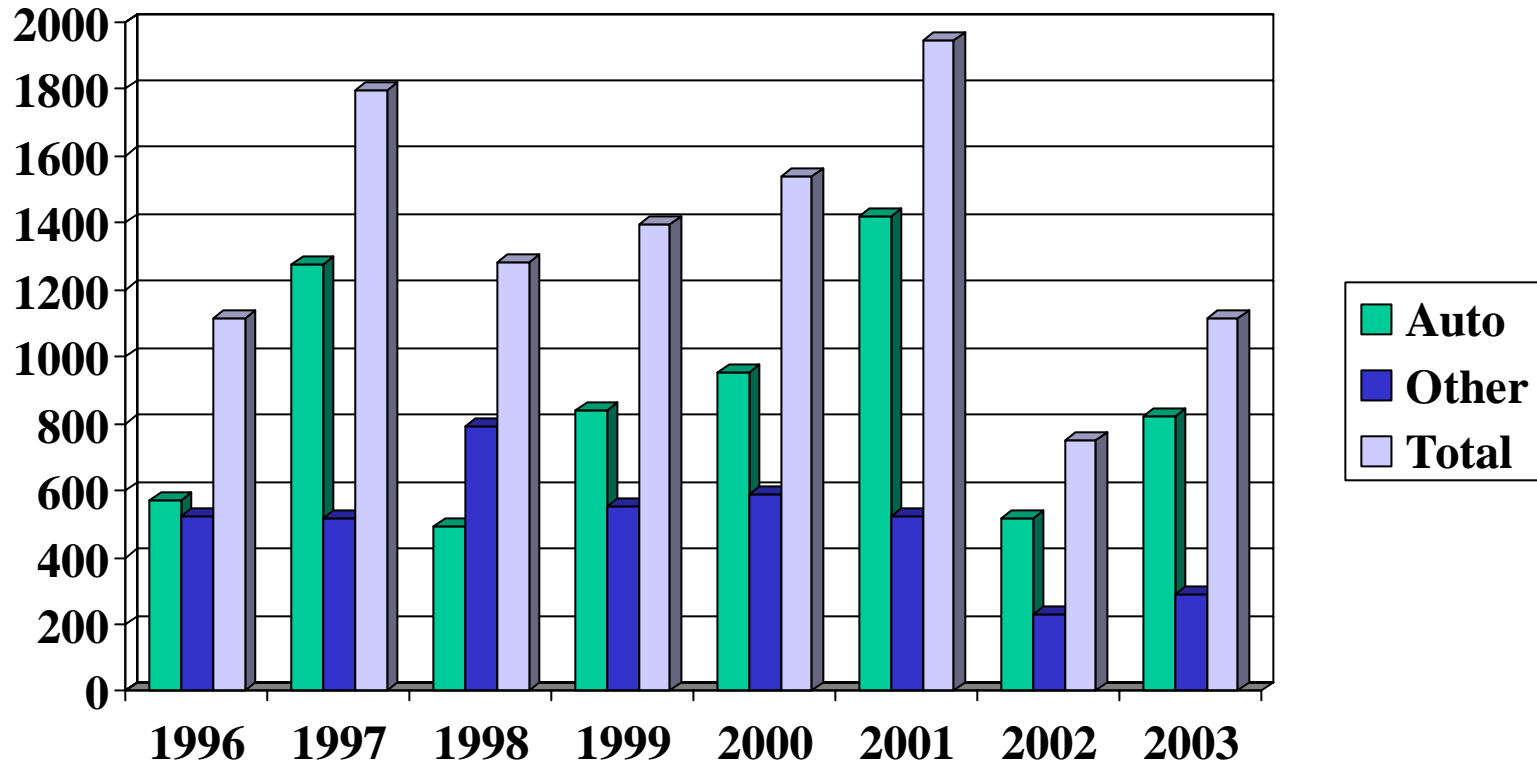
# Industrial Robot Facts

## 3 year non-automotive industry comparison



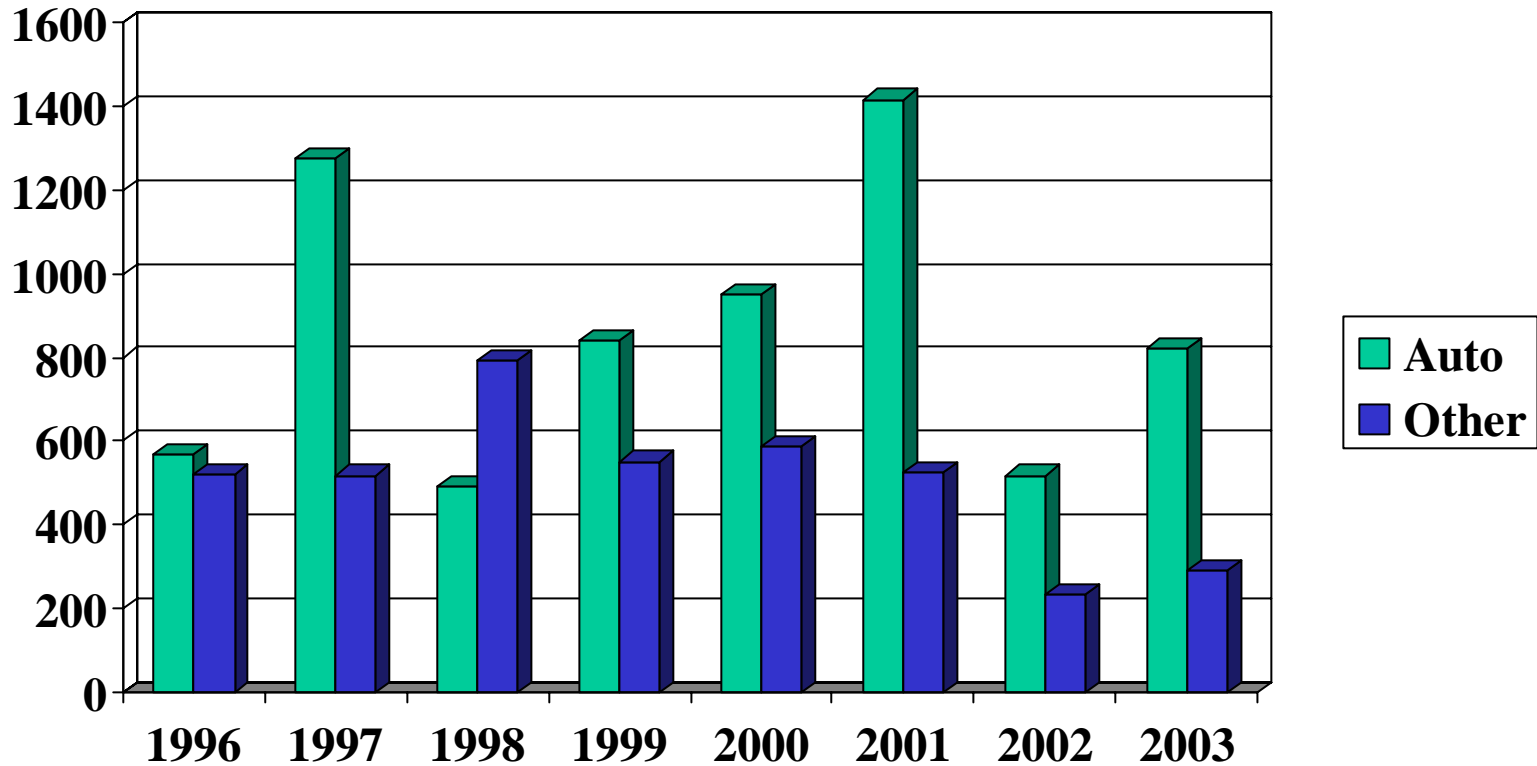
# Industrial Robot Facts

## Auto/other industry comparison



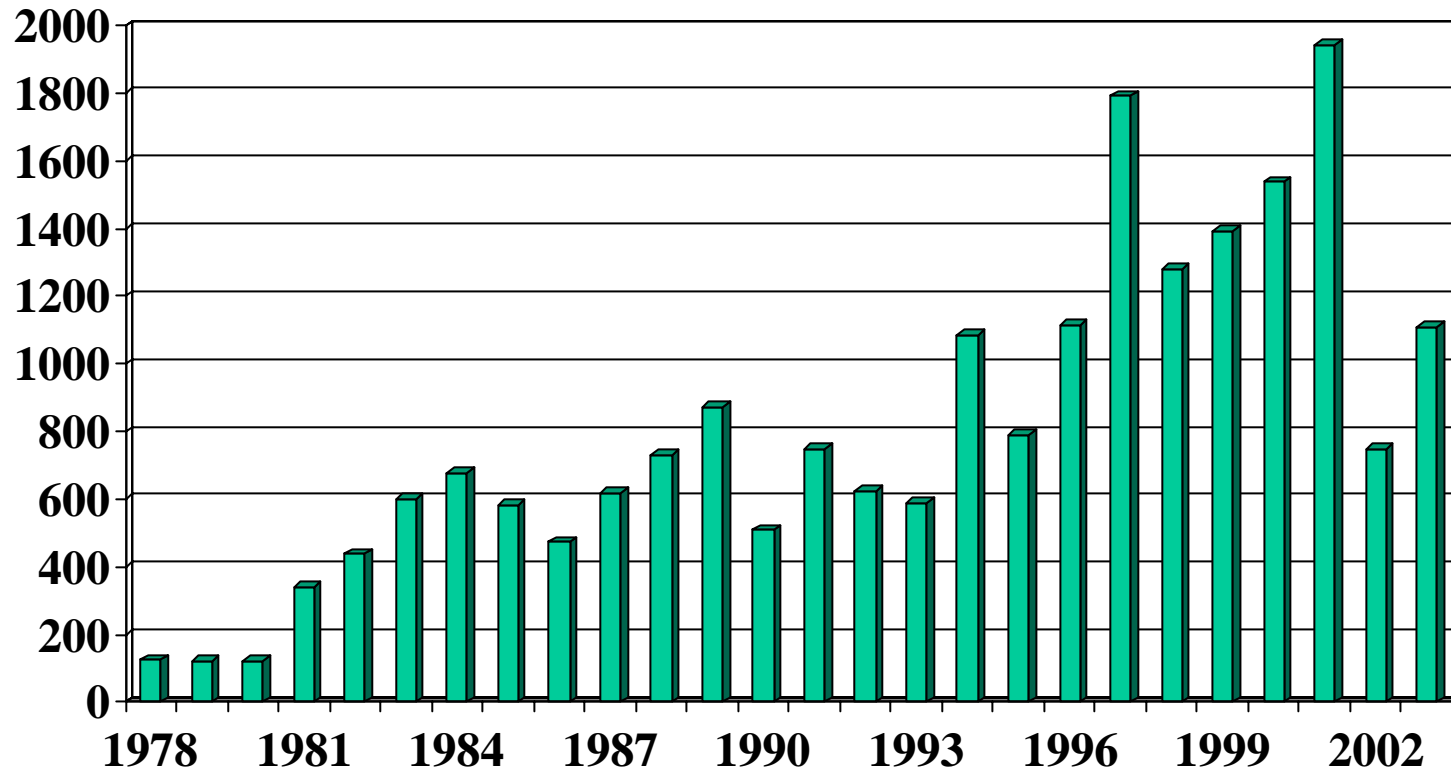
# Industrial Robot Facts

## Auto/other industry comparison



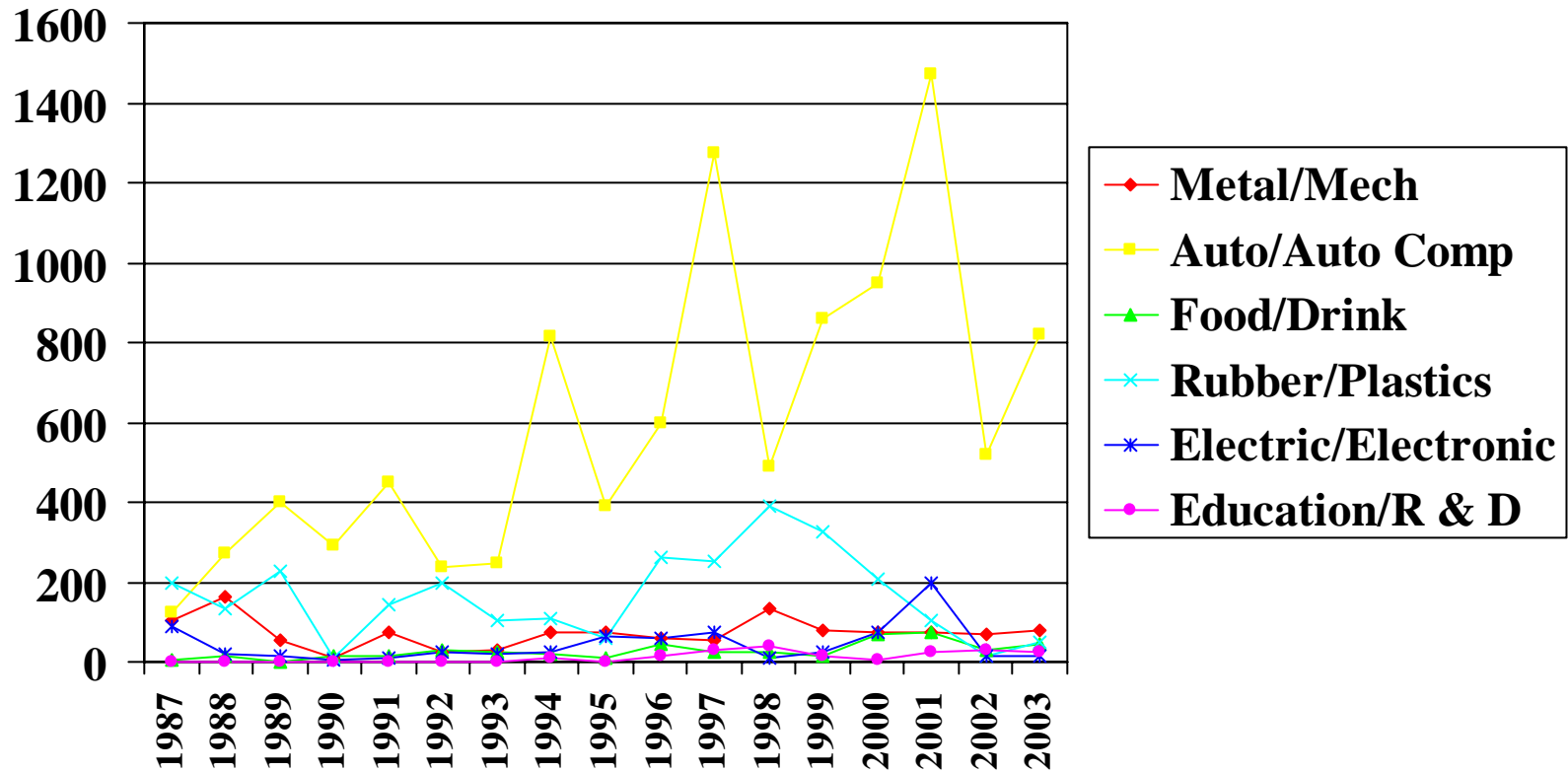
# INDUSTRIAL ROBOT FACTS

## Year on Year Number of Machines Sold



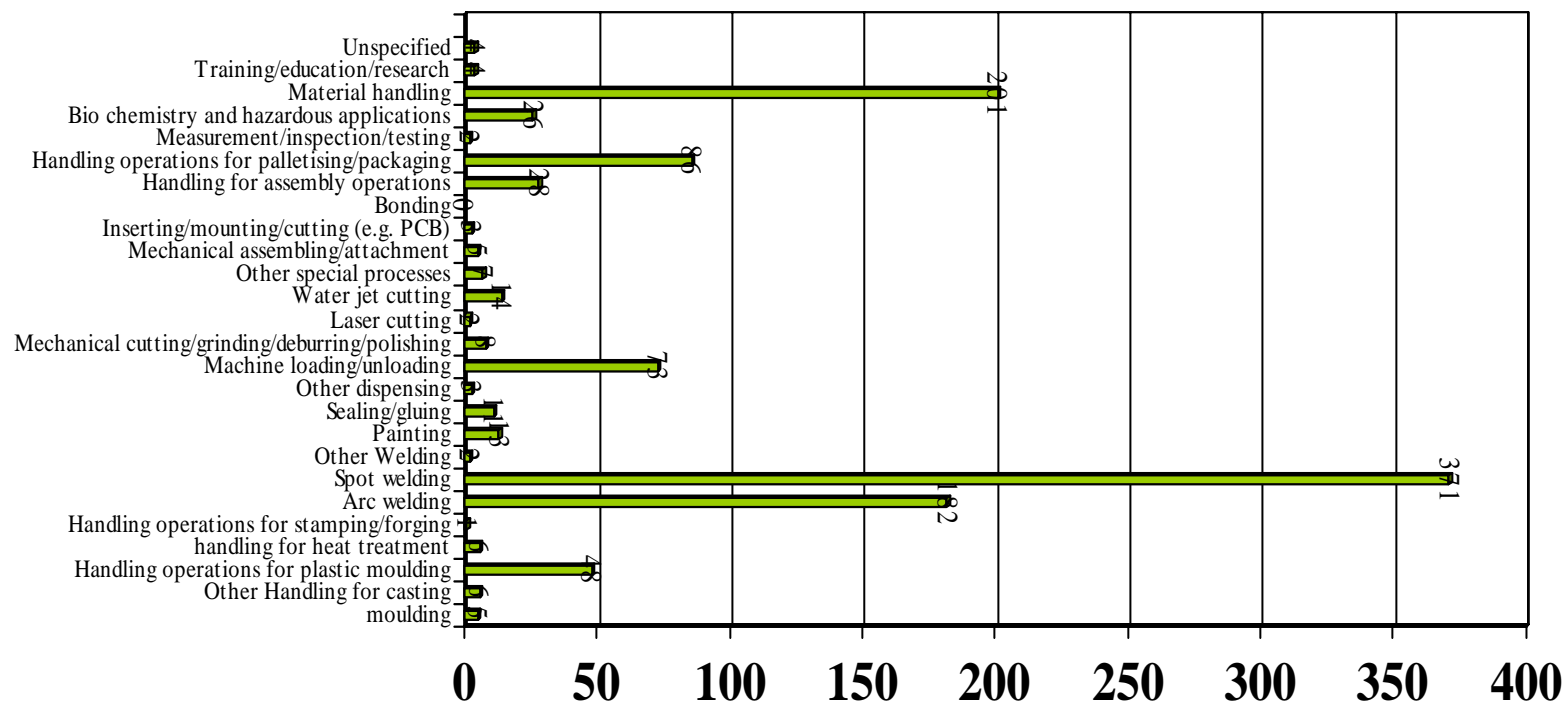
# INDUSTRIAL ROBOT FACTS

## Year on Year Industry Comparison



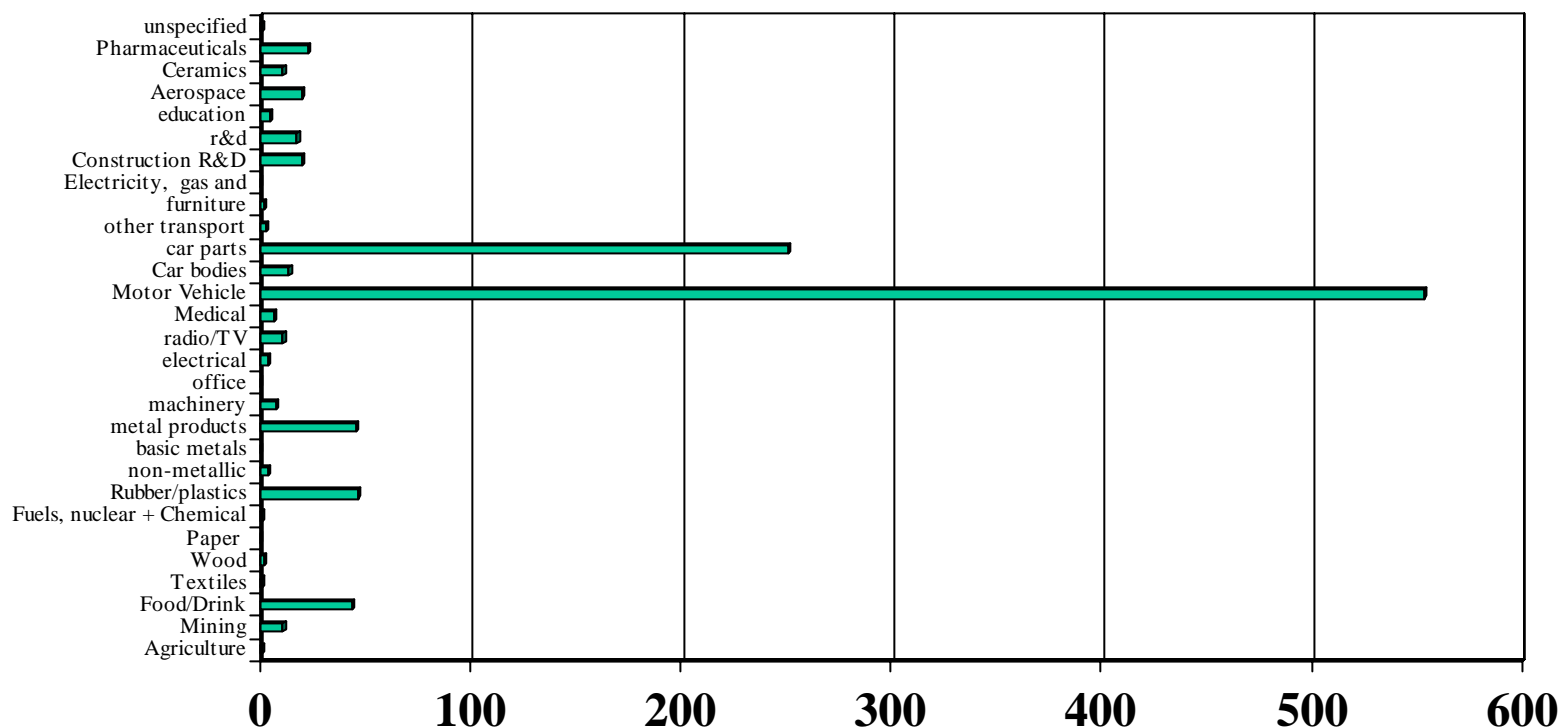
# INDUSTRIAL ROBOT FACTS

## UK Robot application Analysis to IFR Criteria



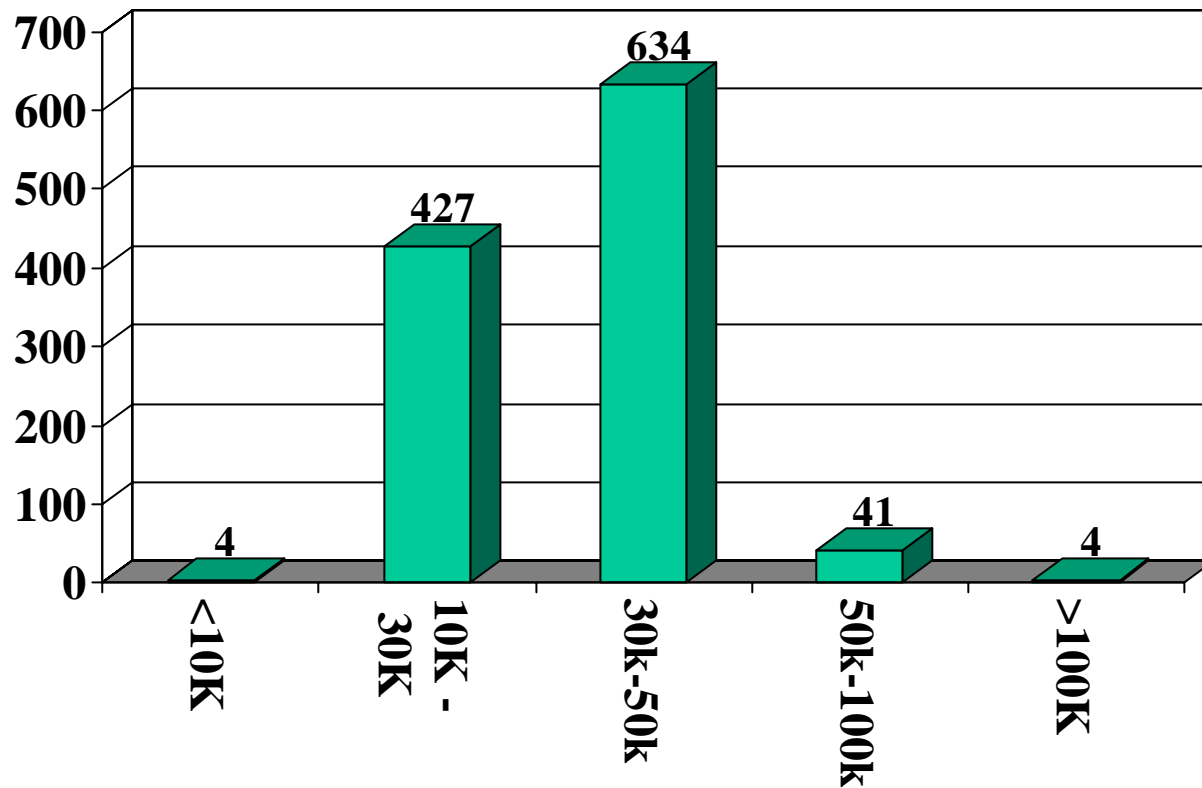
# INDUSTRIAL ROBOT FACTS

## UK Robot Industry Analysis to IFR Criteria



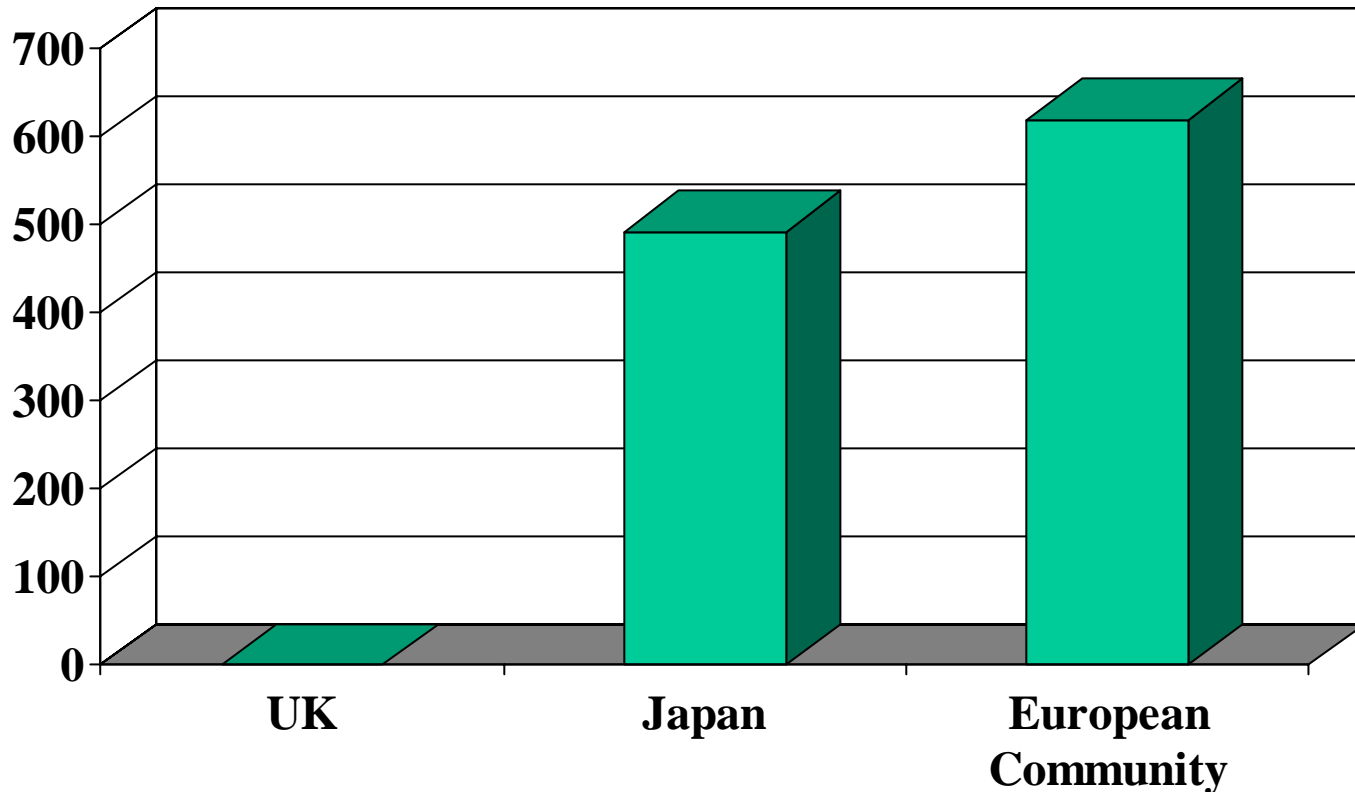
# INDUSTRIAL ROBOT FACTS

## UK Robot Cost Analysis

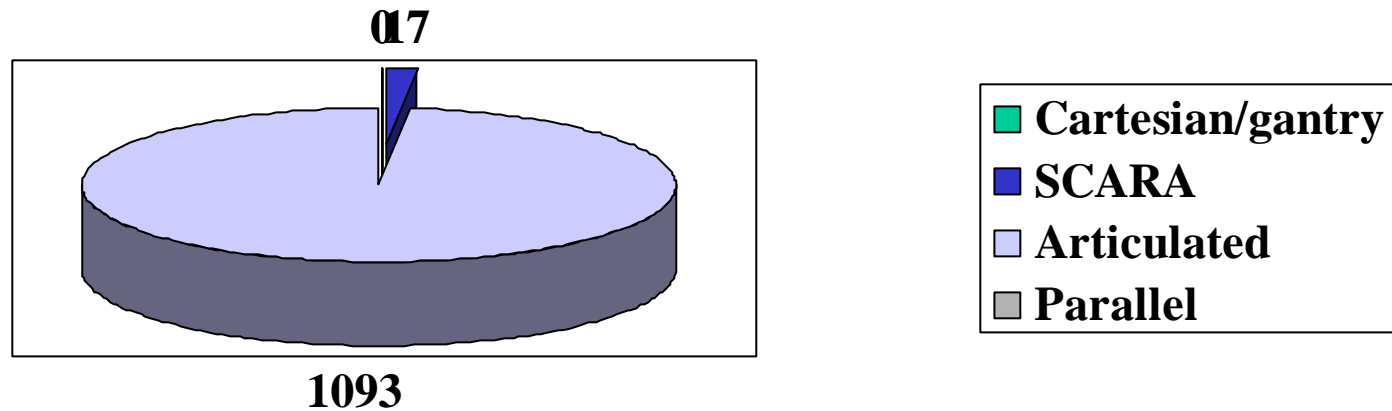


# INDUSTRIAL ROBOT FACTS

Country of Origin of Robots Installed in UK



# Mechanical Structure



# Number of Axes

